



Intensive community supervision  
(a different approach)

















Tim Wolfe -  
Parole  
Supervisor





Kreig Williams -  
Parole  
Supervisor











Bonnie Ferguson -  
Staff Annuitant





Travis George -  
Parole Agent

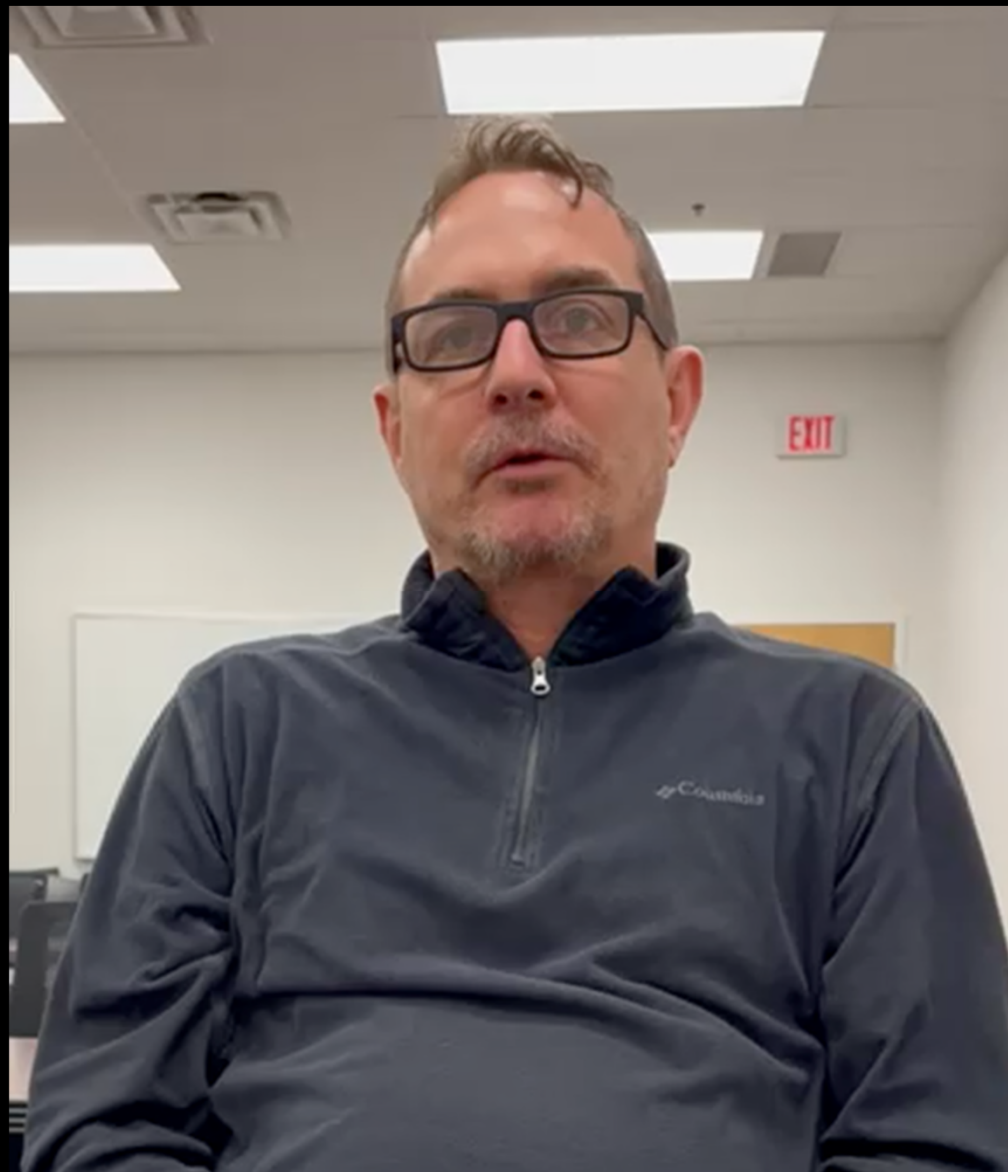


Anthony May –  
Parole Agent





Jeff Nartowicz -  
Parole Agent





Mark Graulty -  
Parole Agent



Daja Palmer-Hill  
Parole Agent



Palmer-Hill, Daja



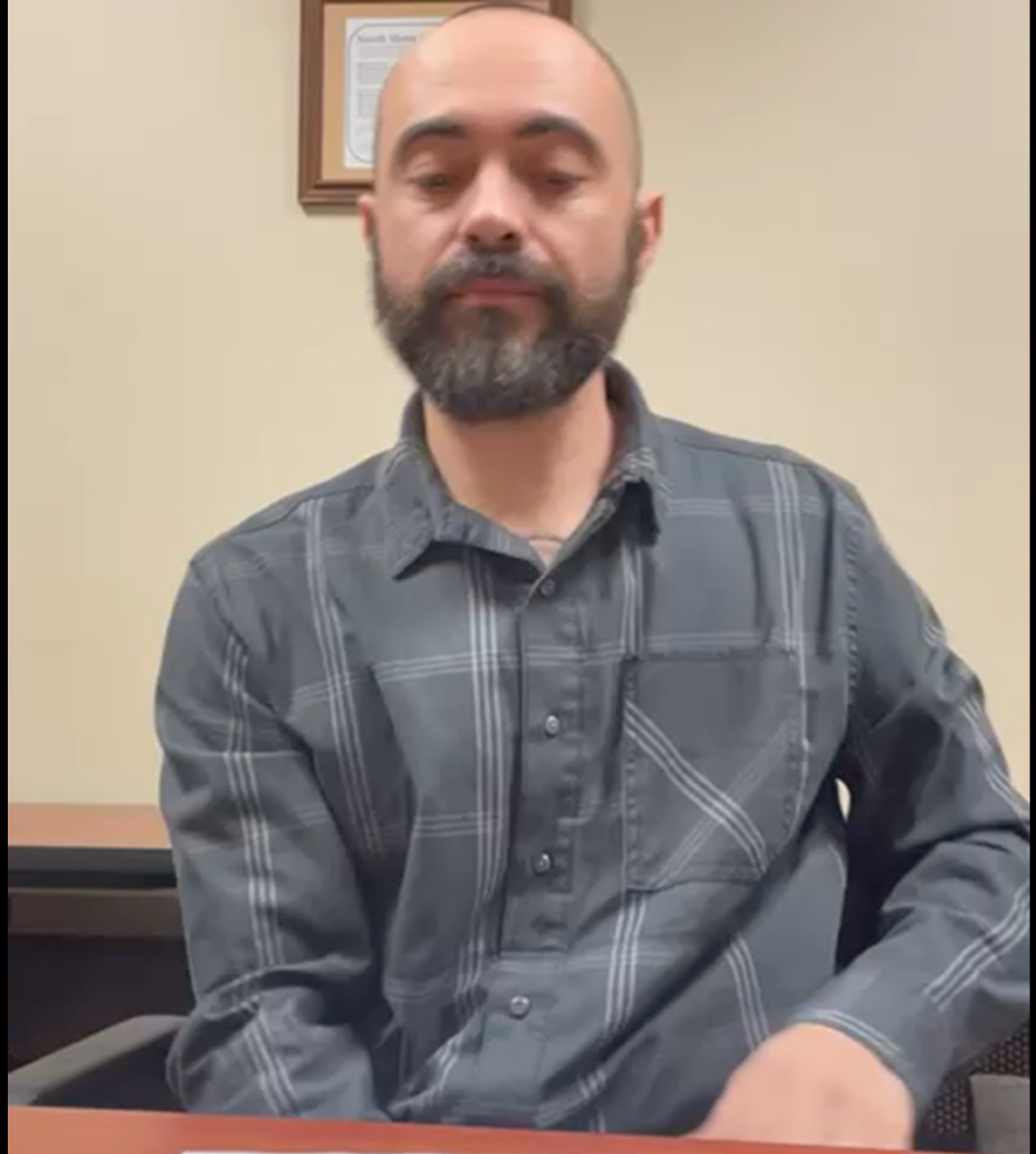
Erik Brown -  
Parole Agent



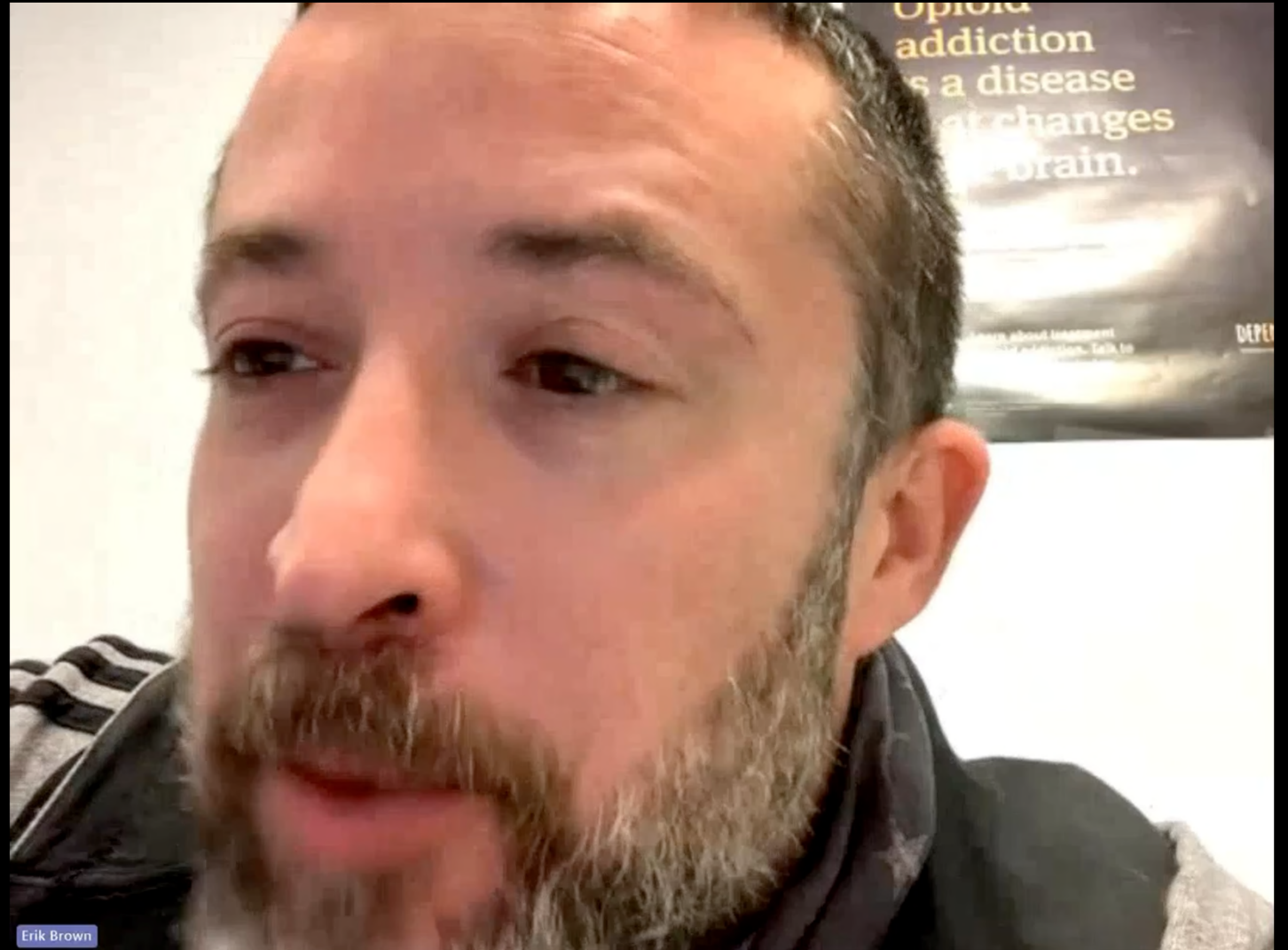




Mark Gaulty -  
Parole Agent



Erik Brown -  
Parole Agent

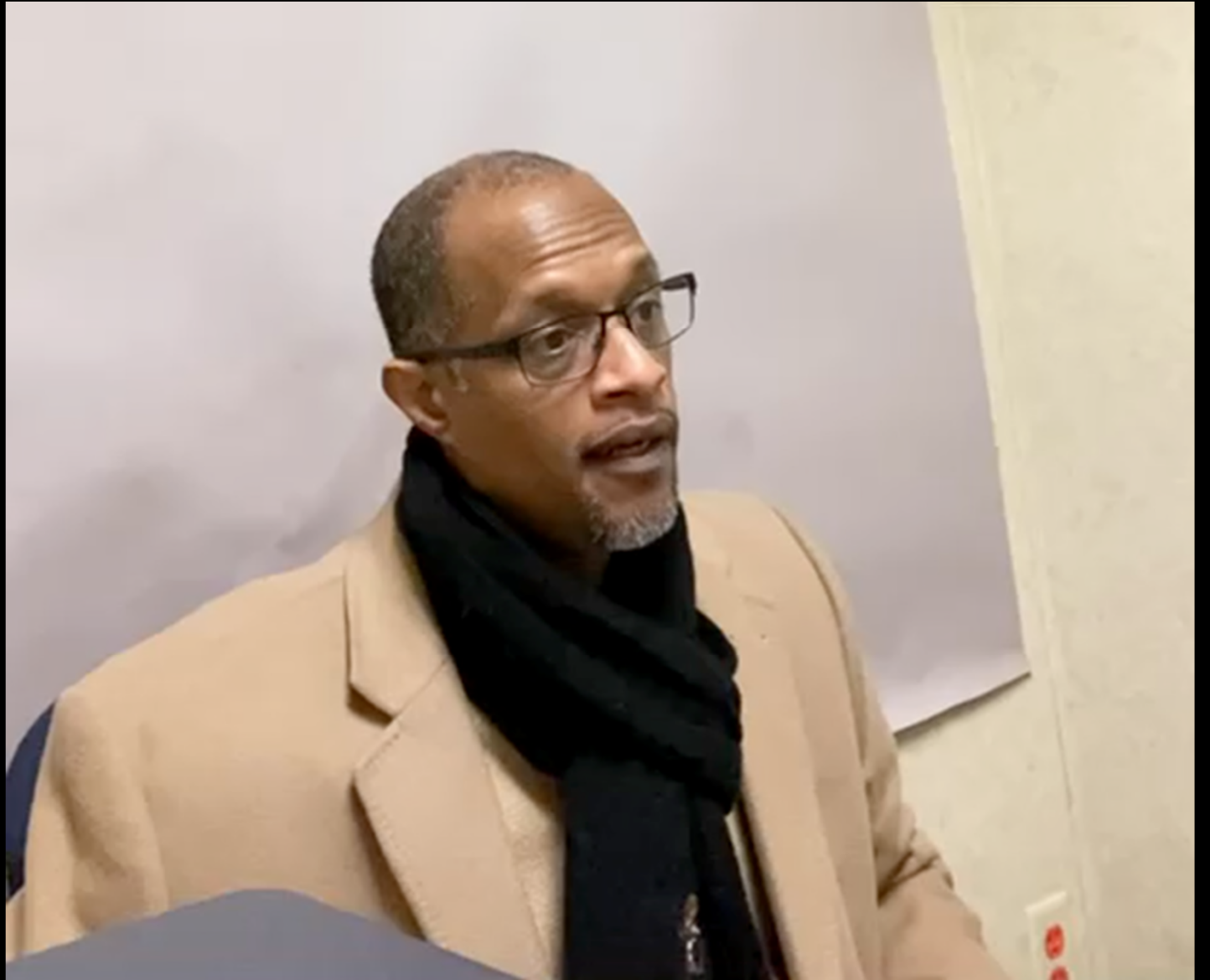




Daja Palmer-Hill  
Parole Agent



Jonathan -  
program  
participant





Jennifer –  
program  
participant



Jonathan -  
program  
participant













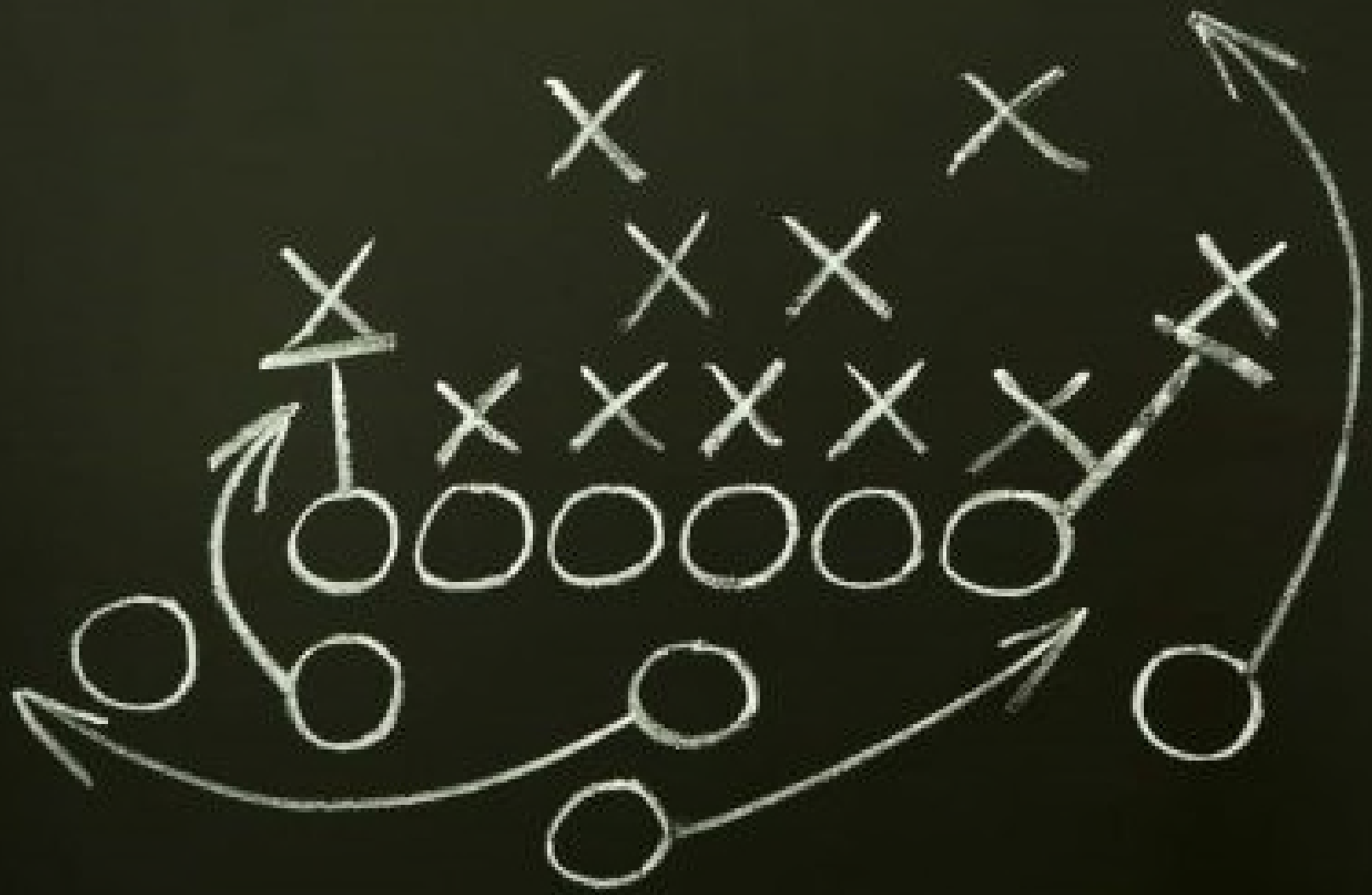










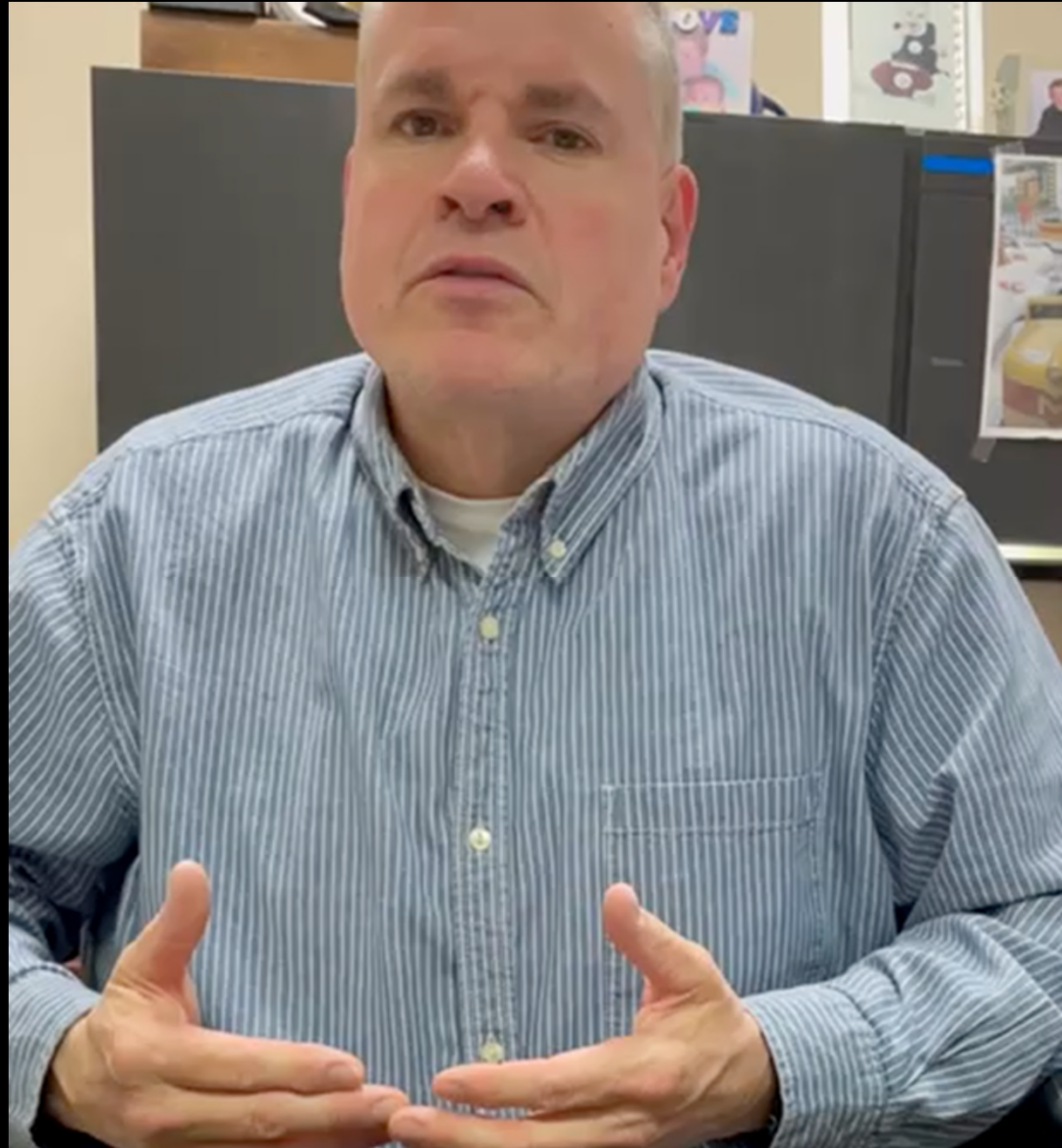








Tim Wolfe -  
Parole  
Supervisor





Parole Supervisor –

Kreig Williams



Bonnie  
Ferguson -  
Staff  
Annuitant

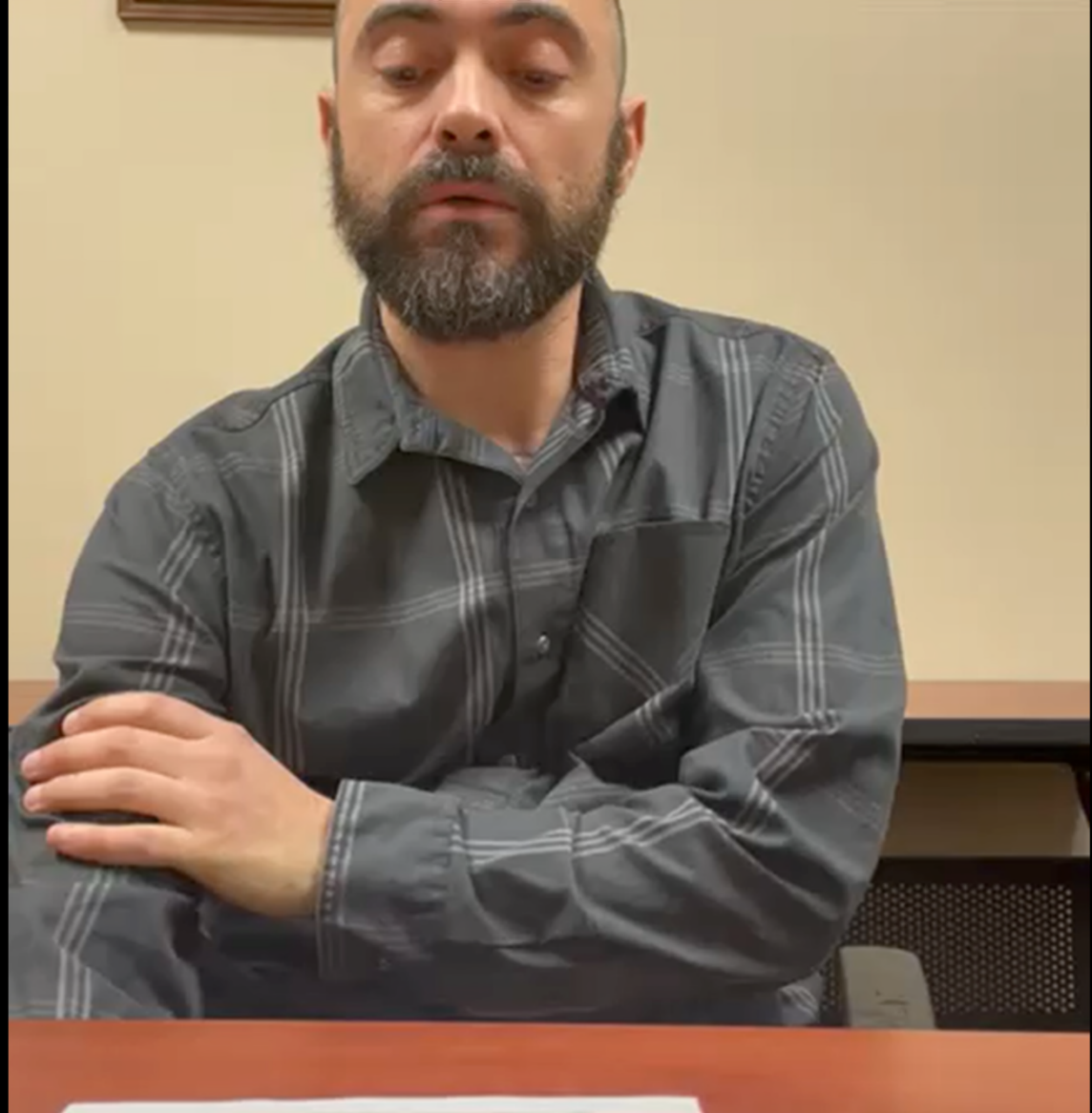


Anthony May –  
Parole Agent

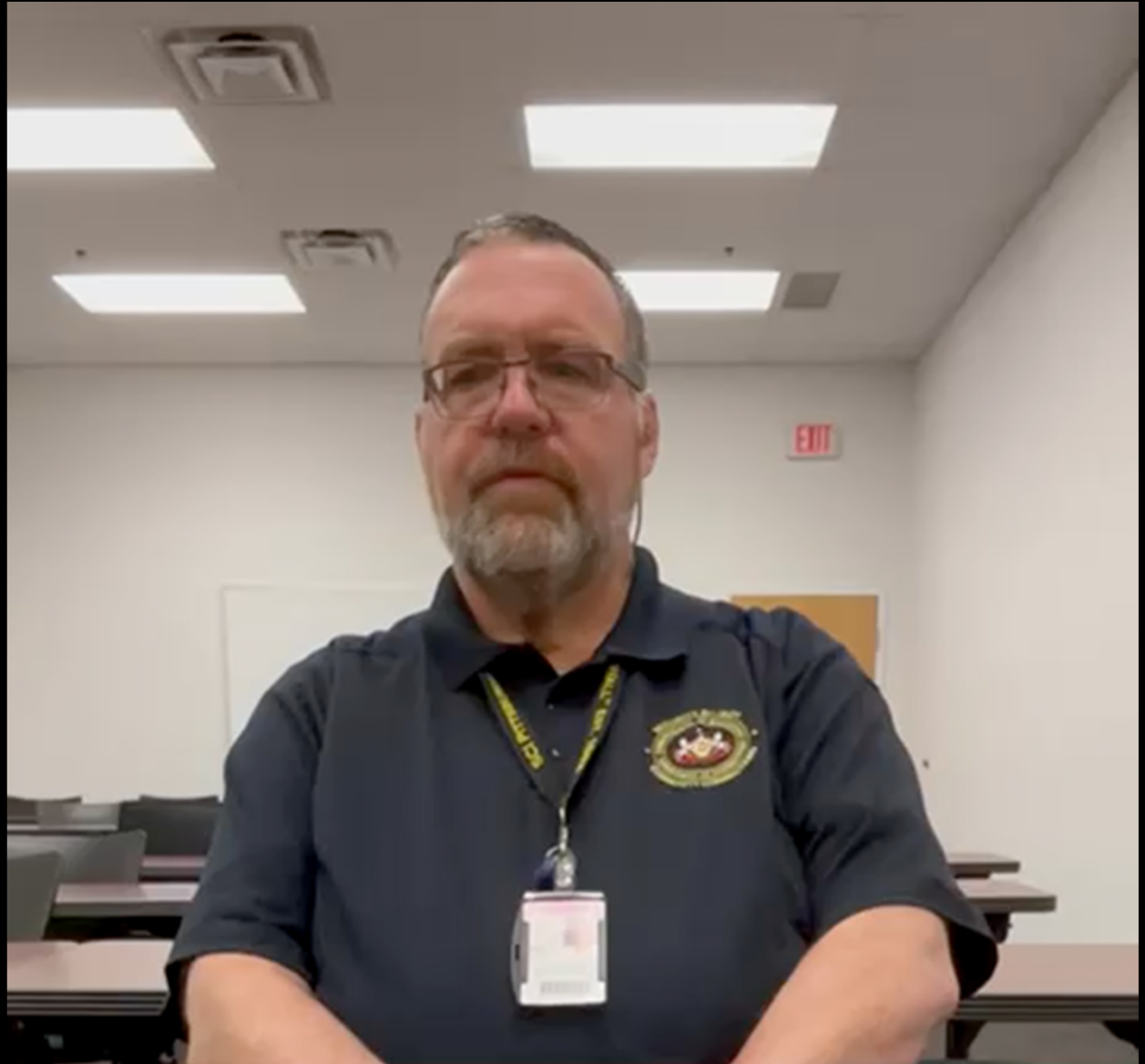




Mark Gaulty -  
Parole Agent



Bob Roche -  
Staff Annuitant



Larry -  
program  
participant





Jonathan -  
program  
participant

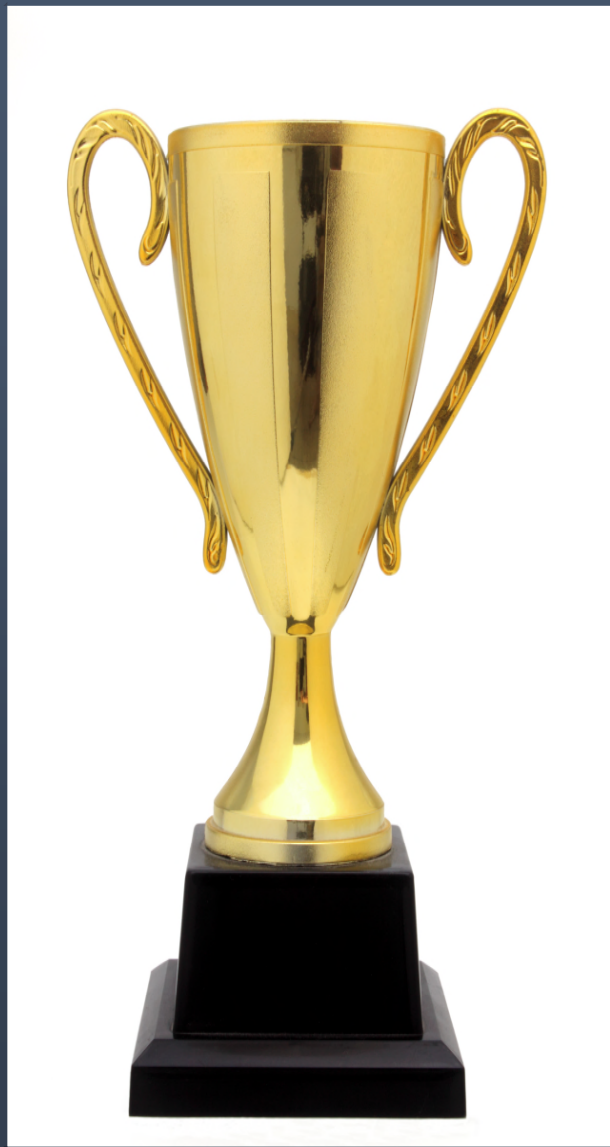




Tim Wolfe -  
Parole  
Supervisor

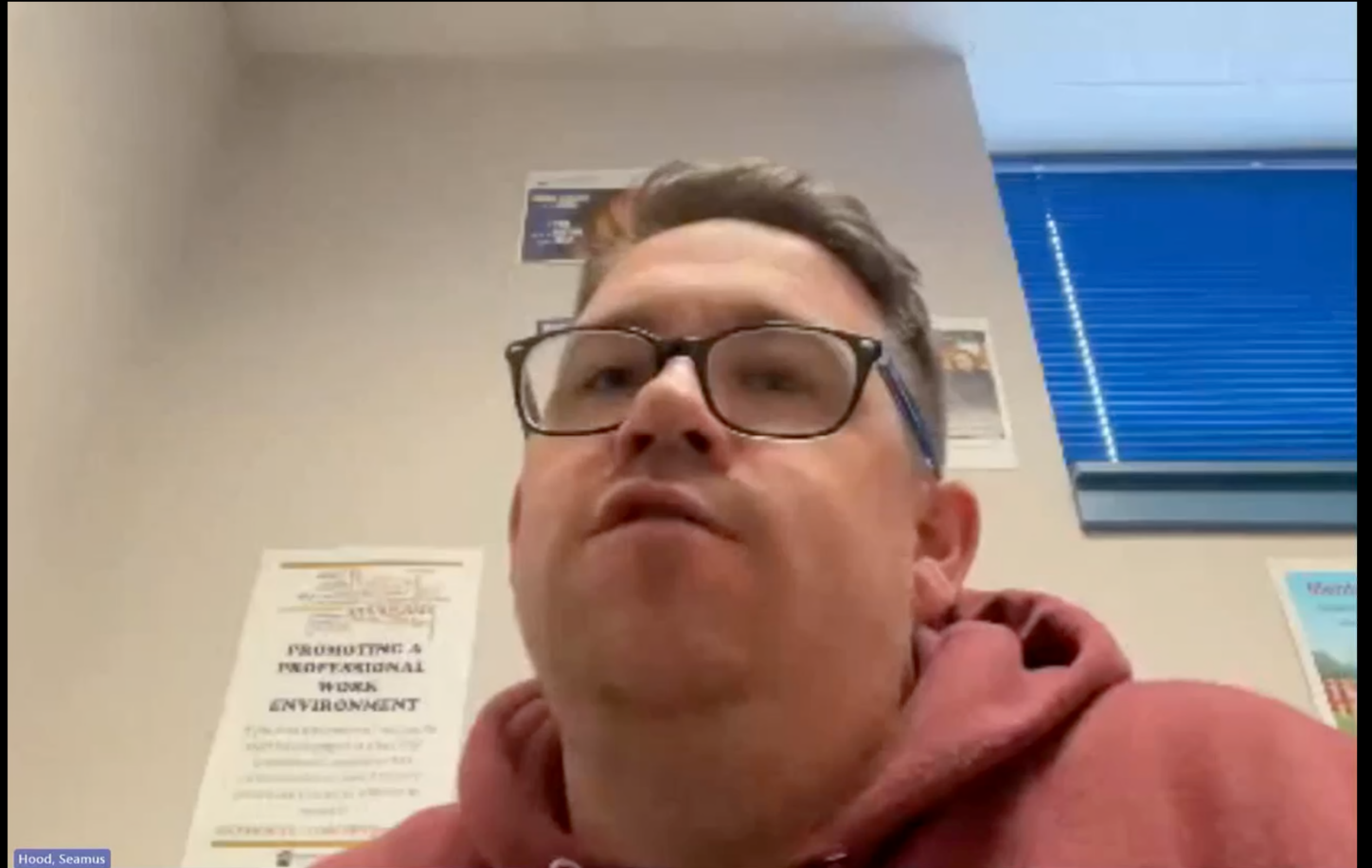








Seamus  
Hood -  
Parole Agent





Bonnie  
Ferguson -  
Staff  
Annuitant



Parole Supervisor –  
Kreig Williams

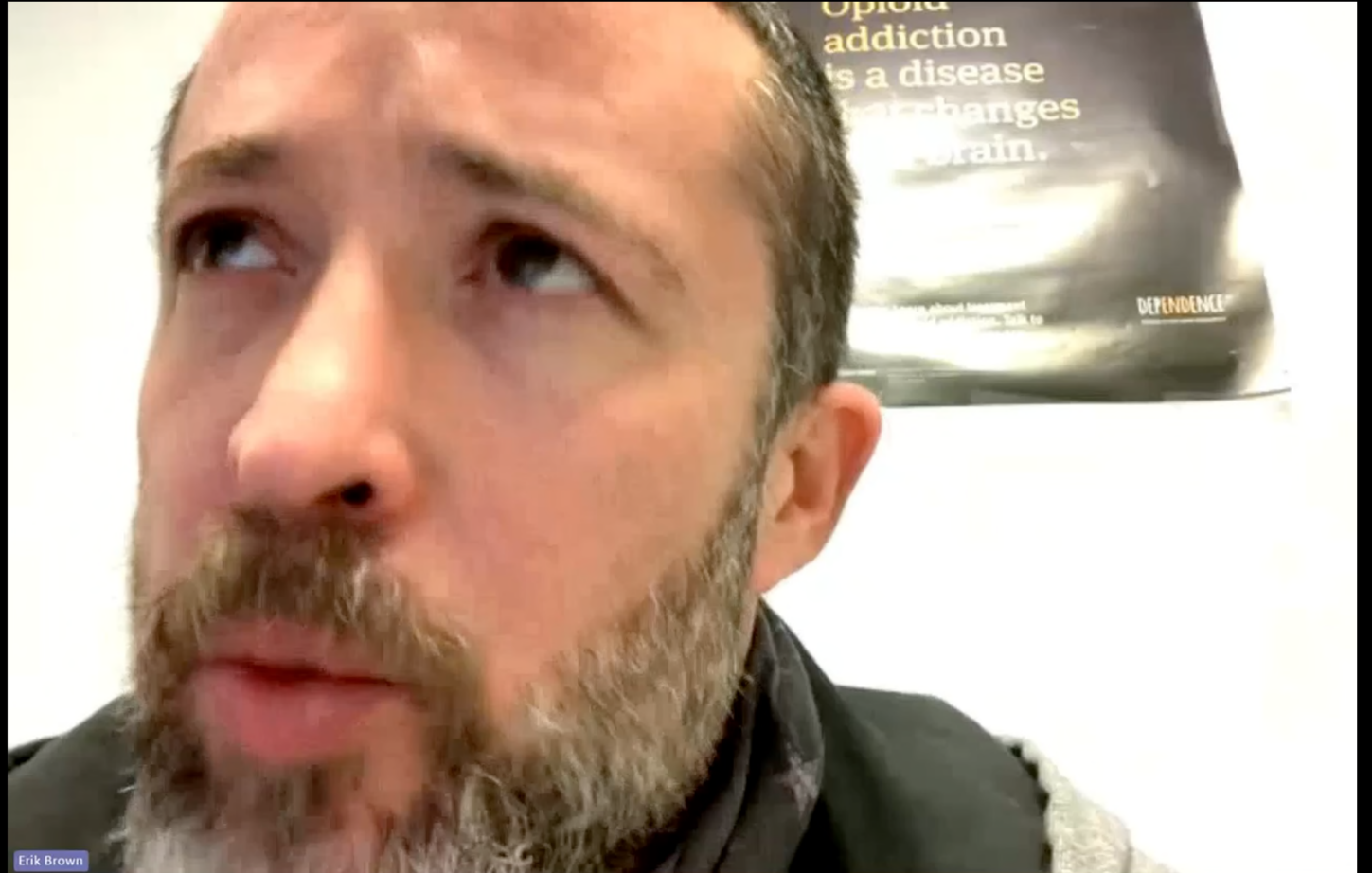


Bonnie  
Ferguson -  
Staff  
Annuitant





Erik Brown -  
Parole Agent



Deric -  
program  
participant



Jonathan -  
program  
participant

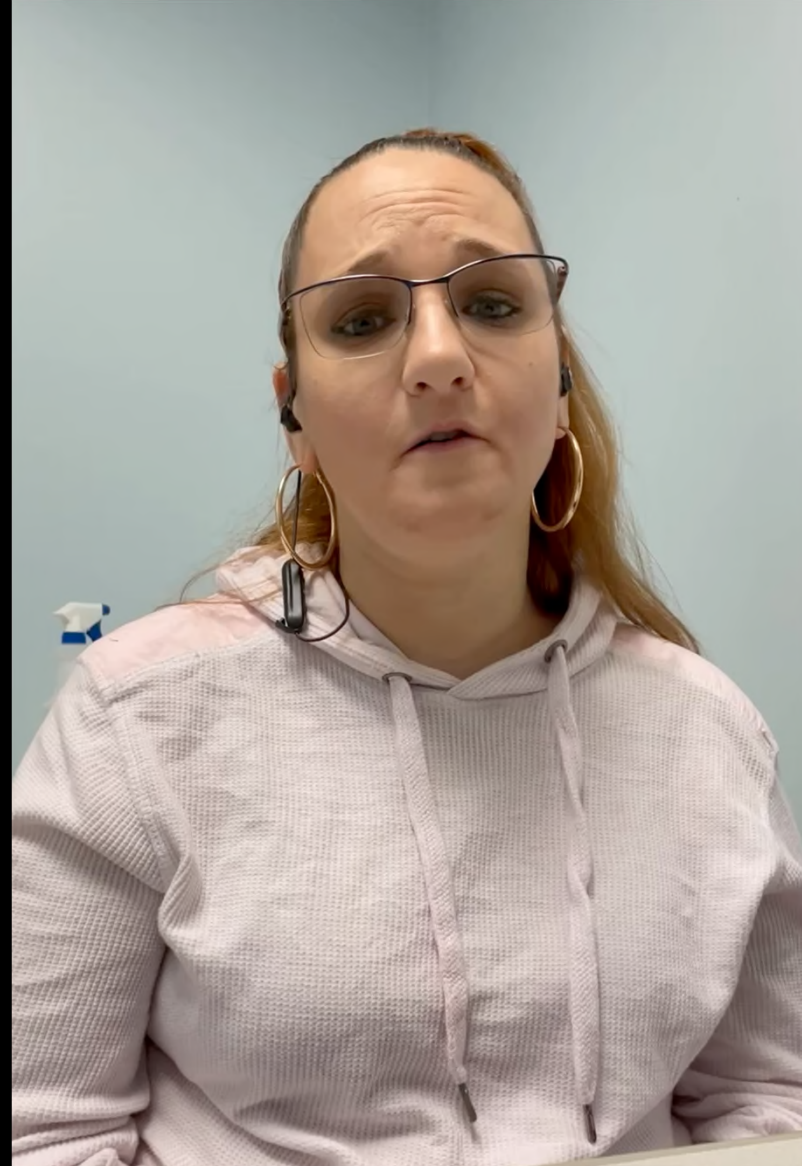




Larry -  
program  
participant



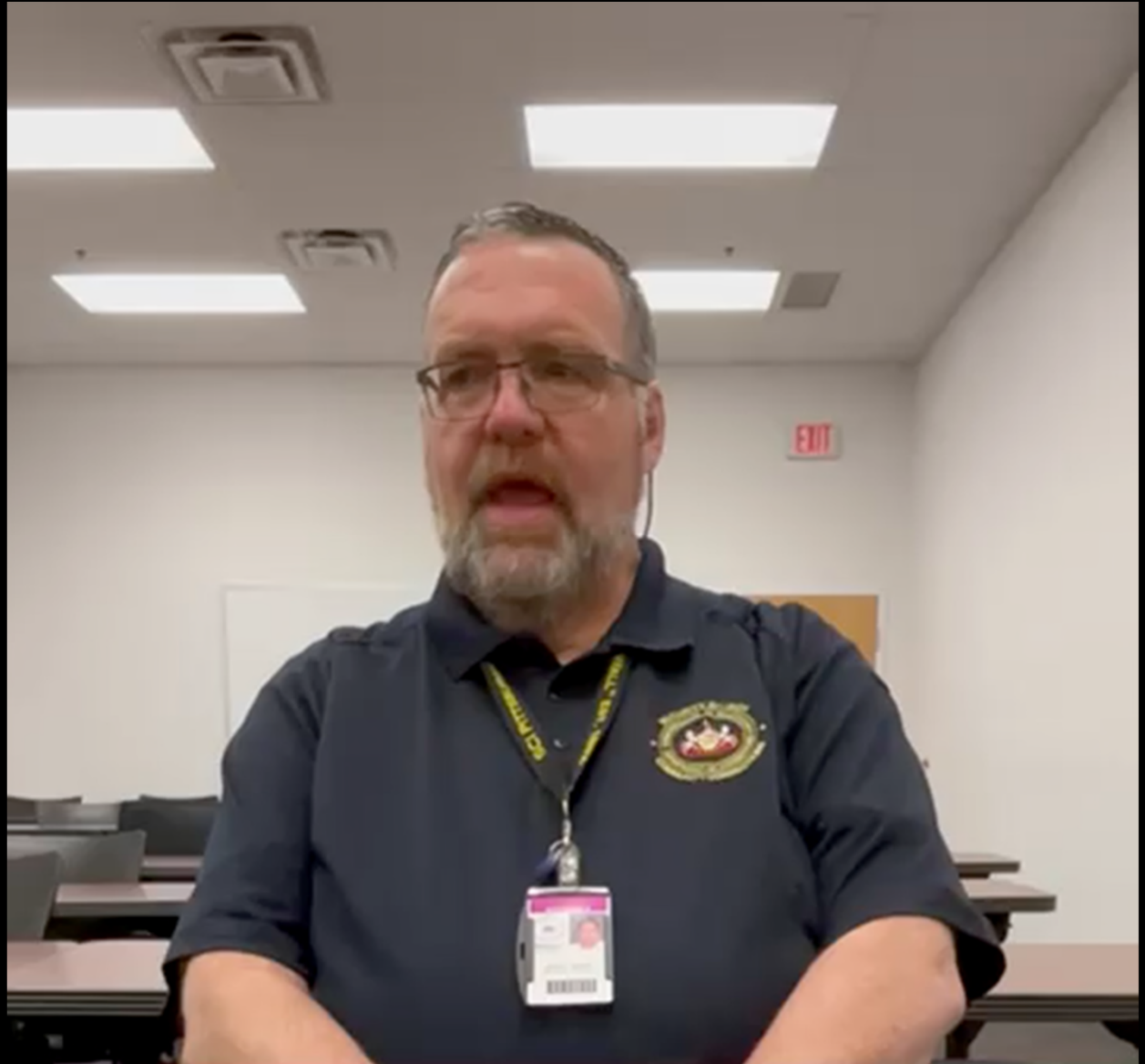
Jennifer –  
program  
participant



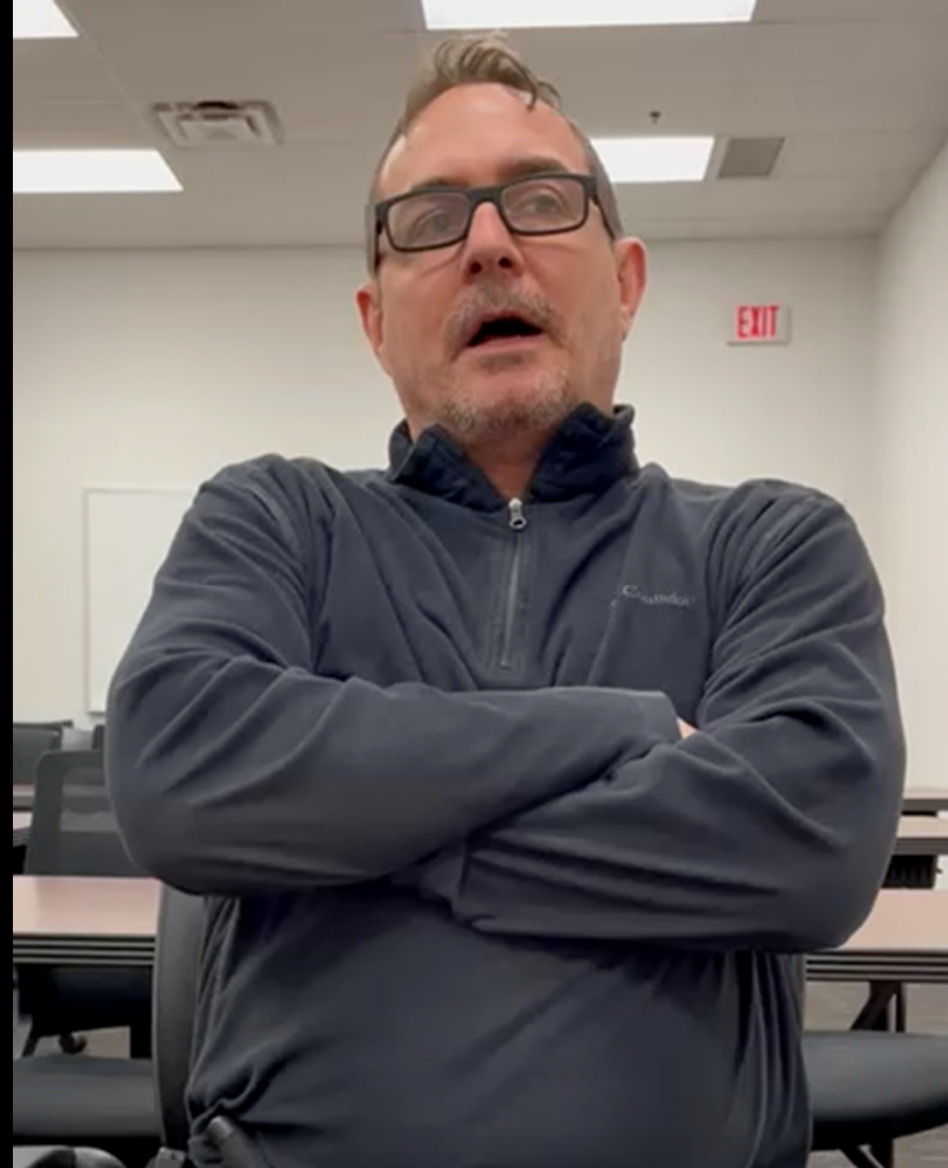




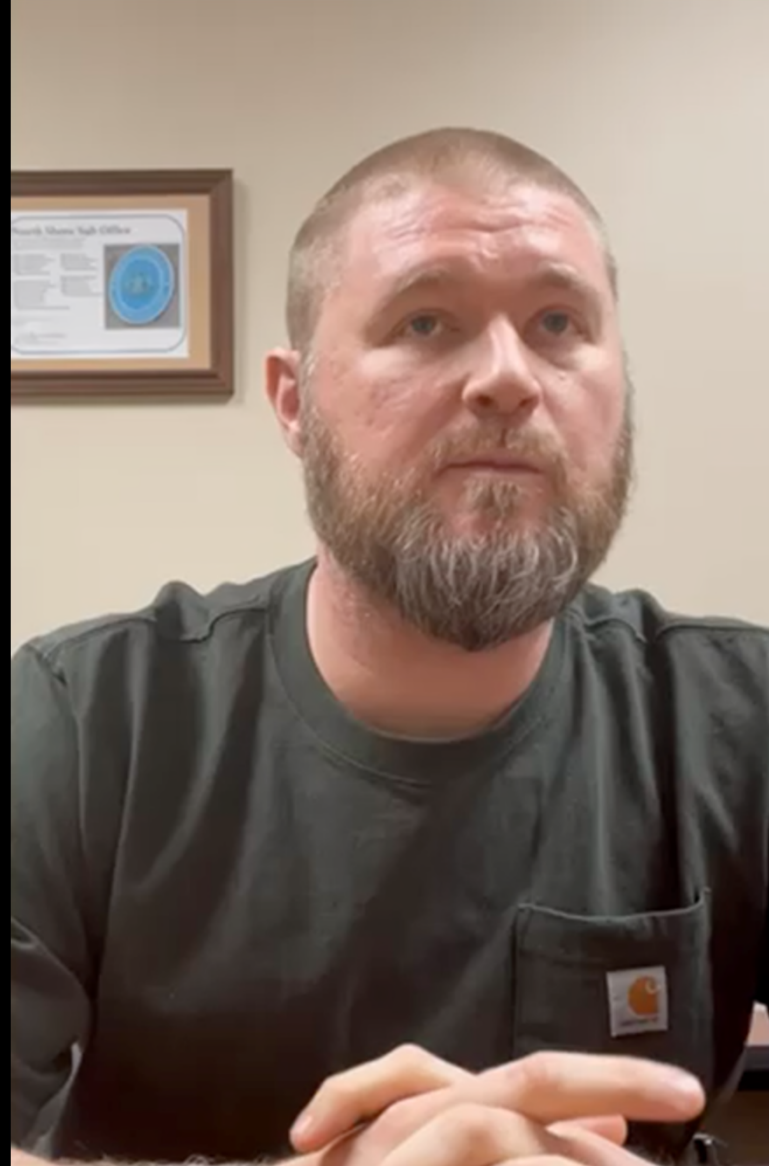
Bob Roche -  
Staff Annuitant



Jeff Nartowicz -  
Parole Agent



Travis George –  
Parole Agent

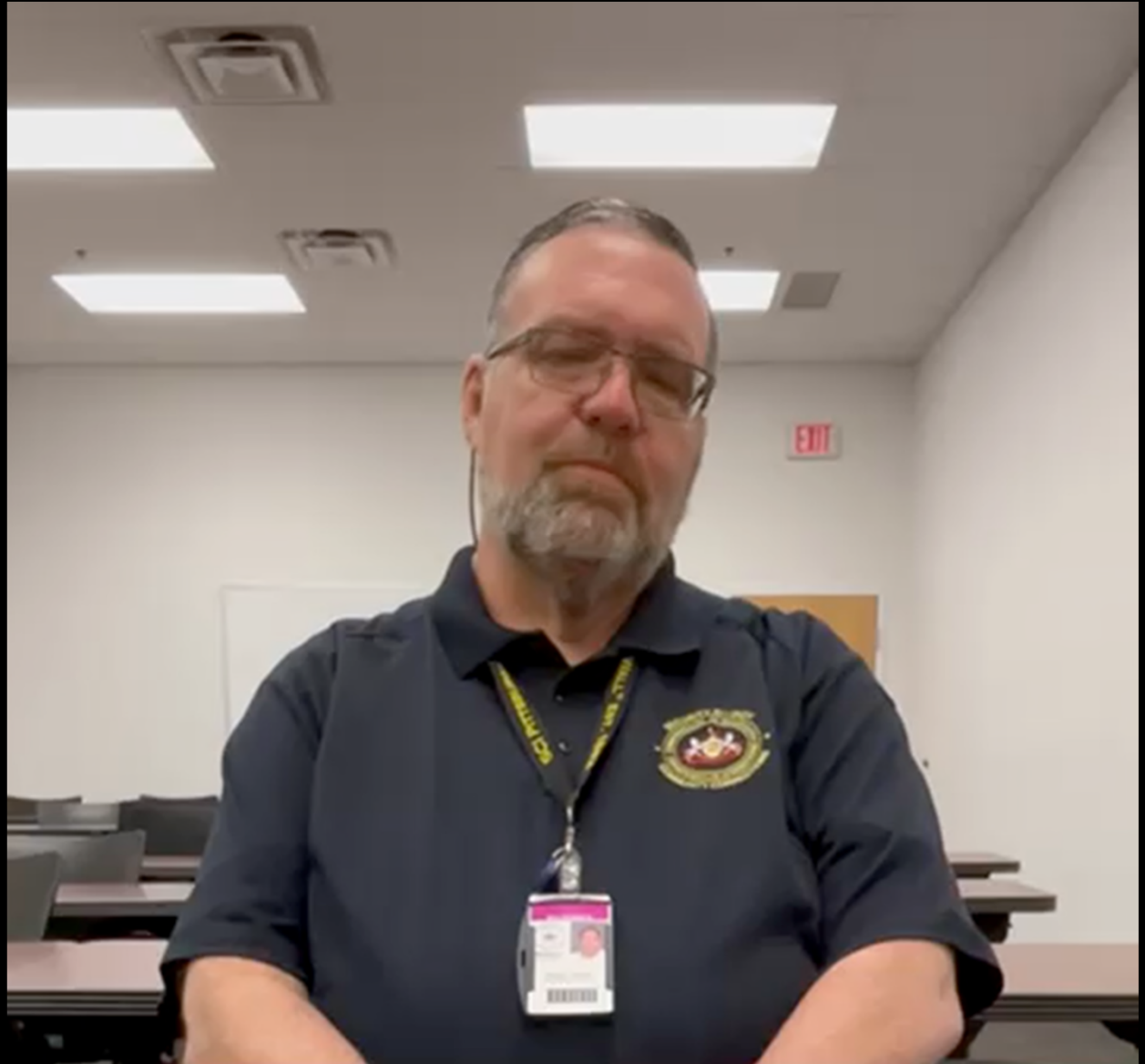




Seamus Hood -  
Parole Agent



Bob Roche -  
Staff Annuitant



Daja Palmer-Hill  
Parole Agent



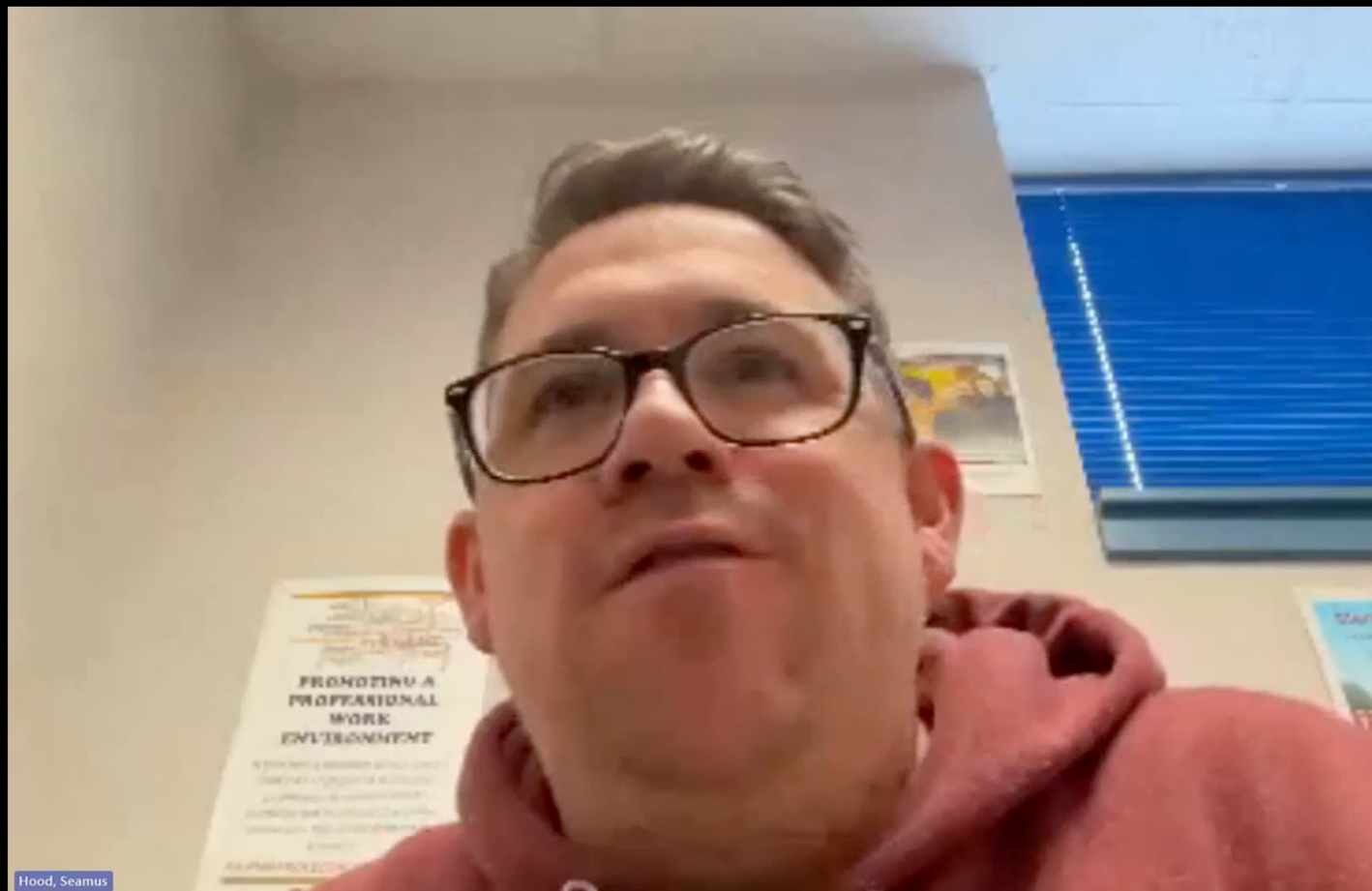
Palmer-Hill, Daja



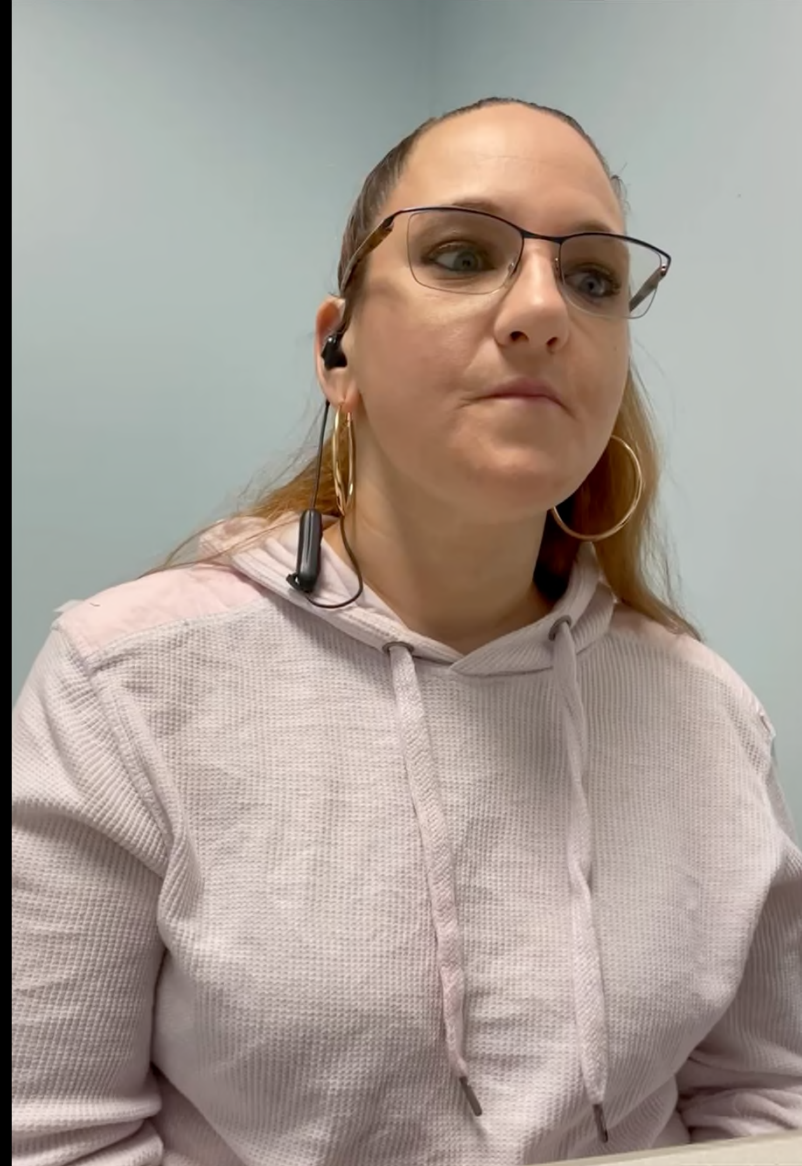
Erik Brown -  
Parole Agent



Seamus Hood -  
Parole Agent



Jennifer –  
program  
participant

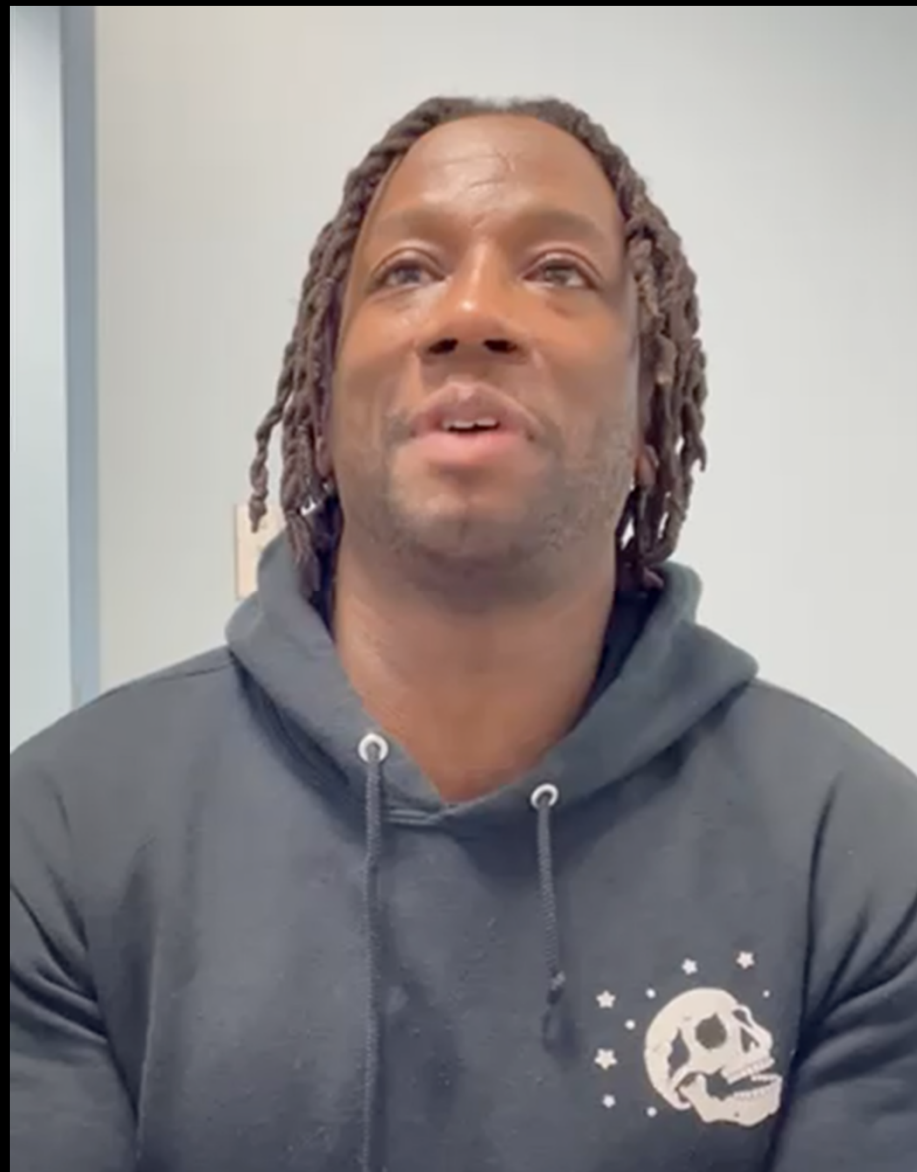




Jonathan -  
program  
participant



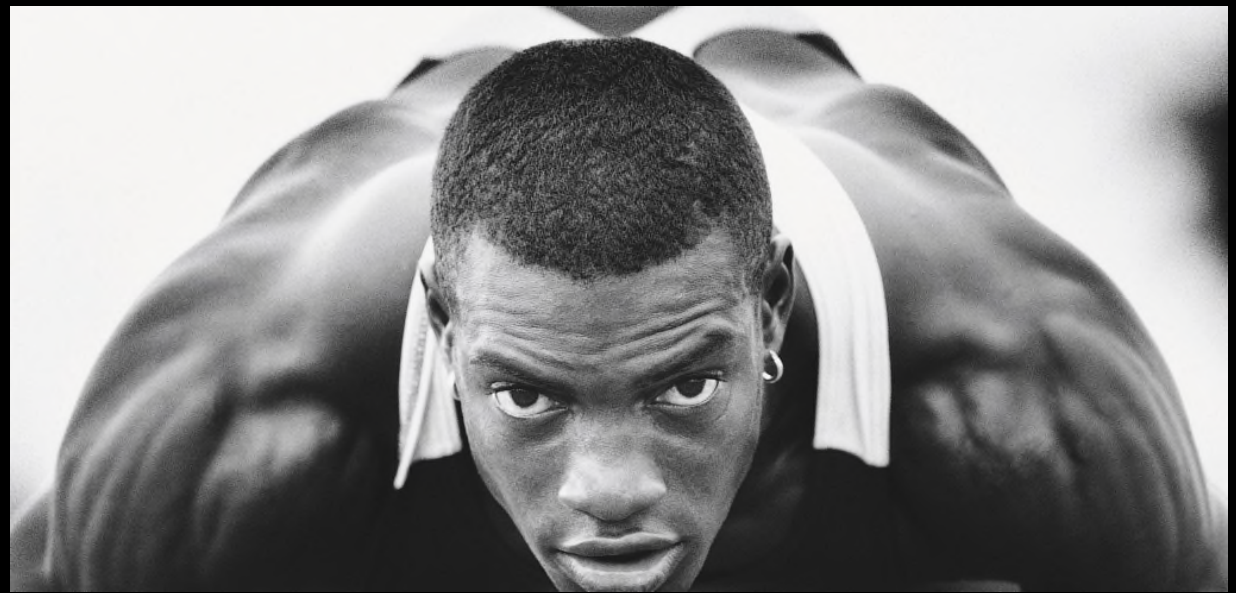
Larry -  
program  
participant



Deric -  
program  
participant



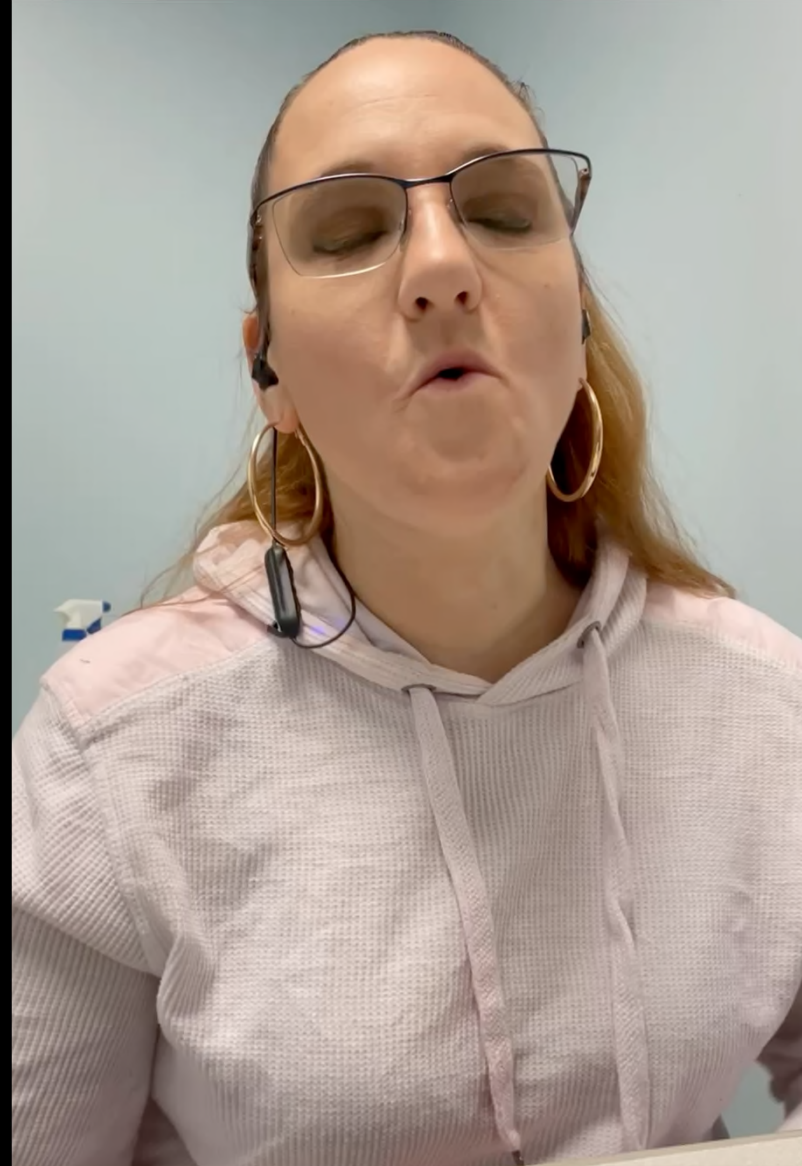






Meet people where they are,  
not where you think they  
"should be" already.

Jennifer –  
program  
participant

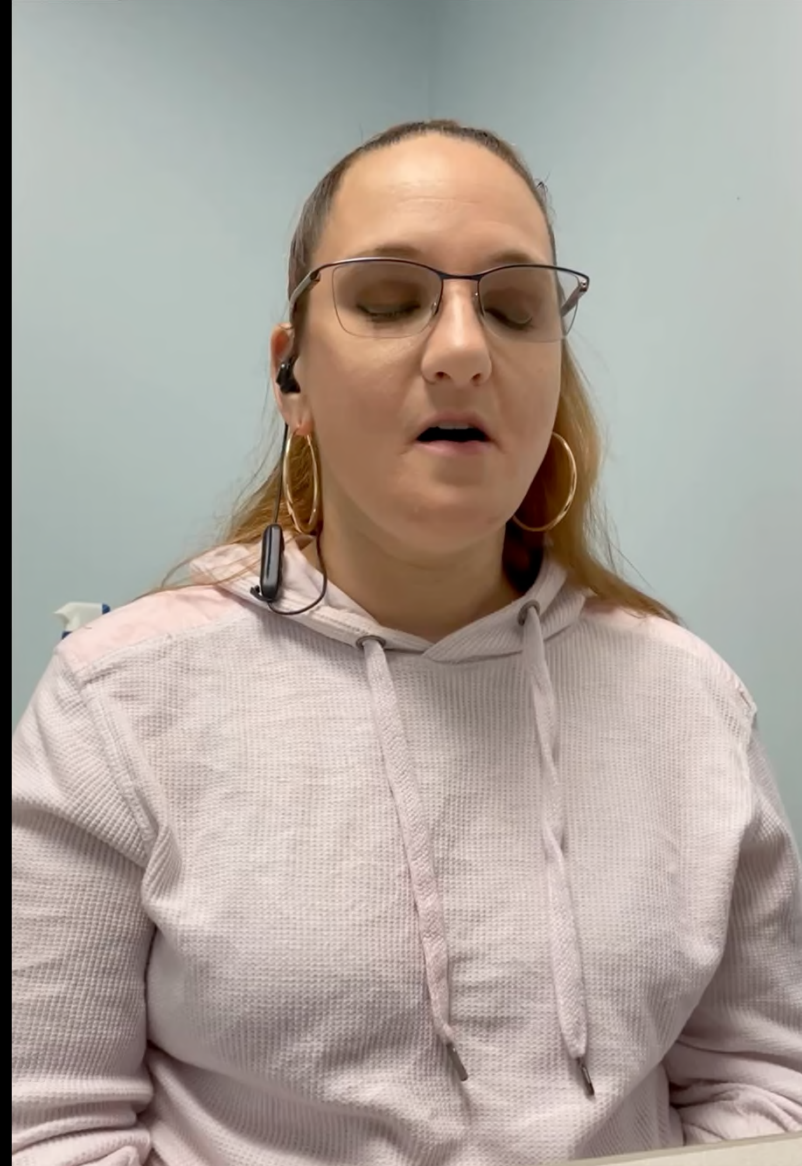




Jonathan -  
program  
participant



Jennifer –  
program  
participant

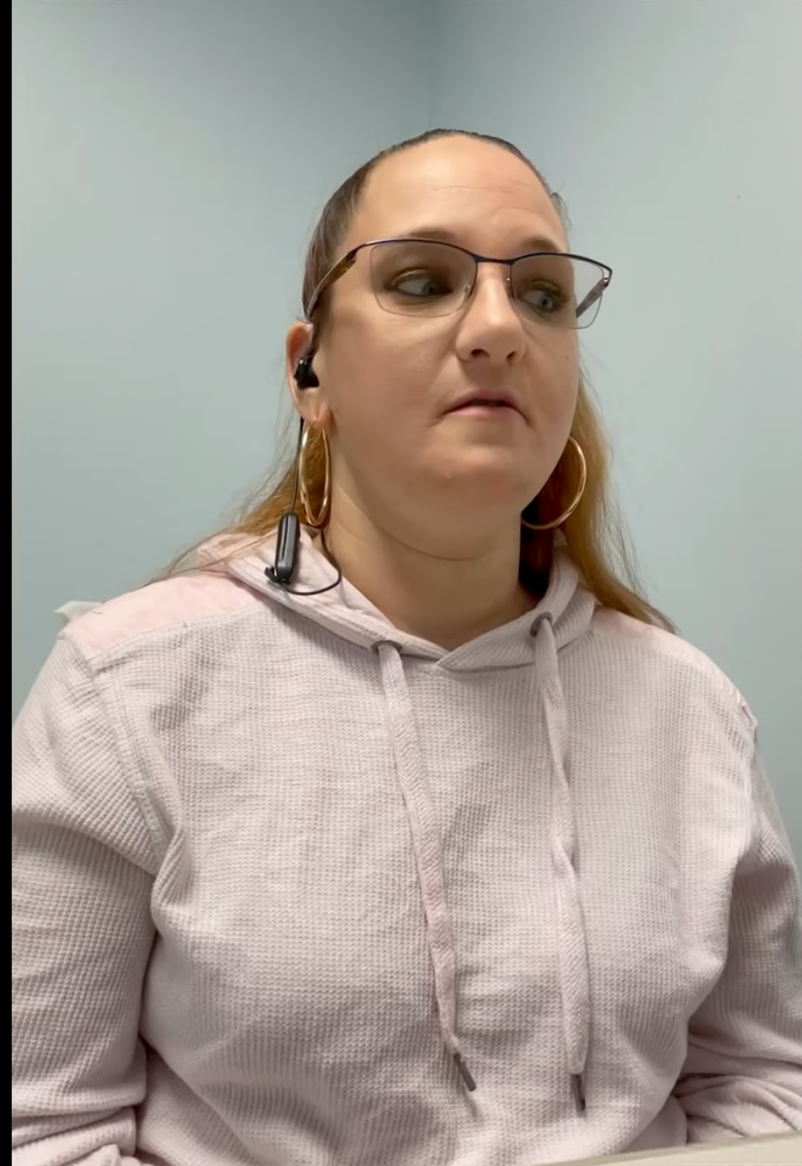


Deric -  
program  
participant





Jennifer –  
program  
participant



Larry -  
program  
participant





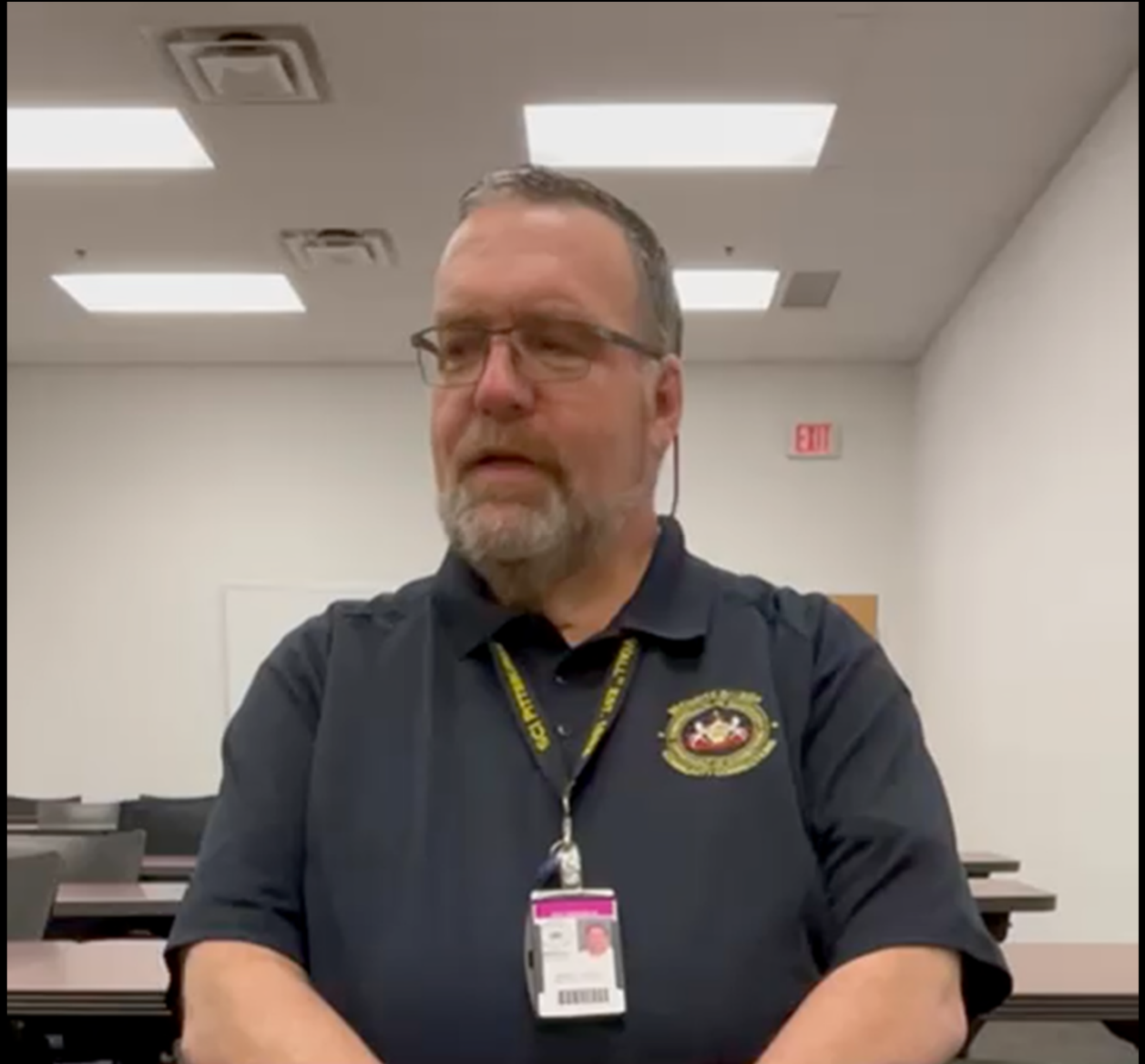




Bonnie  
Ferguson -  
Staff  
Annuitant



Bob Roche -  
Staff Annuitant

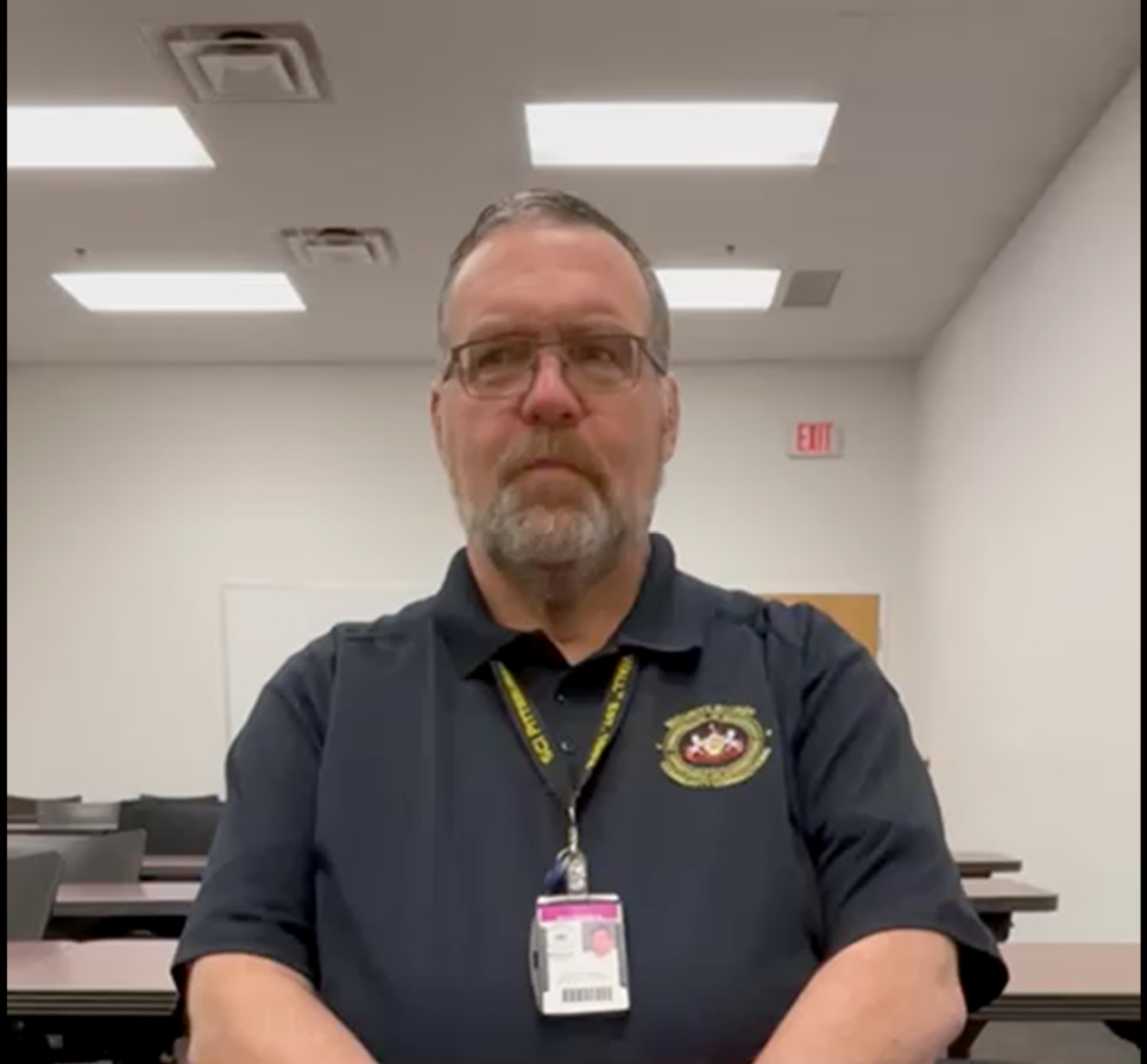


Bonnie  
Ferguson -  
Staff  
Annuitant

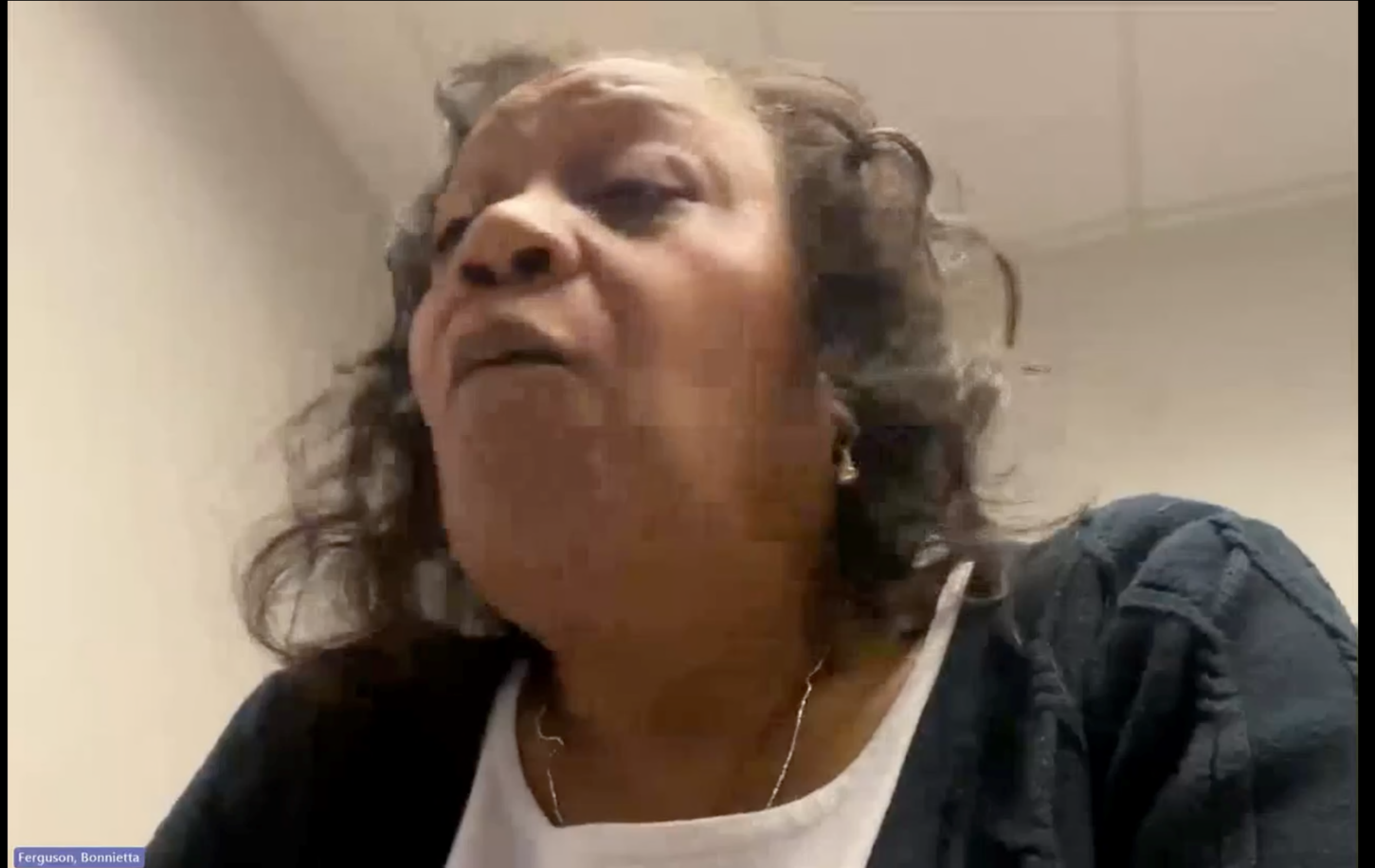




Bob Roche -  
Staff Annuitant



Bonnie  
Ferguson -  
Staff  
Annuitant



Bob Roche -  
Staff Annuitant









# BJA

---

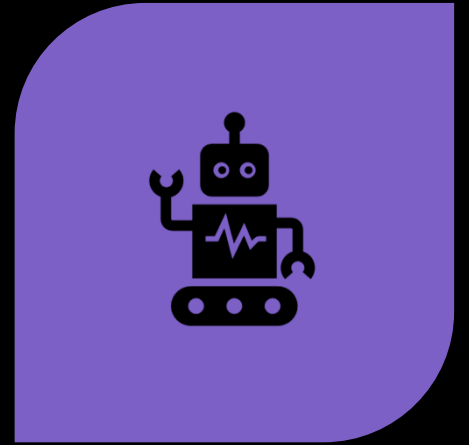
**Bureau of Justice Assistance  
U.S. Department of Justice**



APPLIED FOR BJA SMART SUPERVISION  
GRANT SUPPORTED BY A PROPOSED  
BUDGET



CREATED A PLANNING AND  
IMPLEMENTATION GUIDE



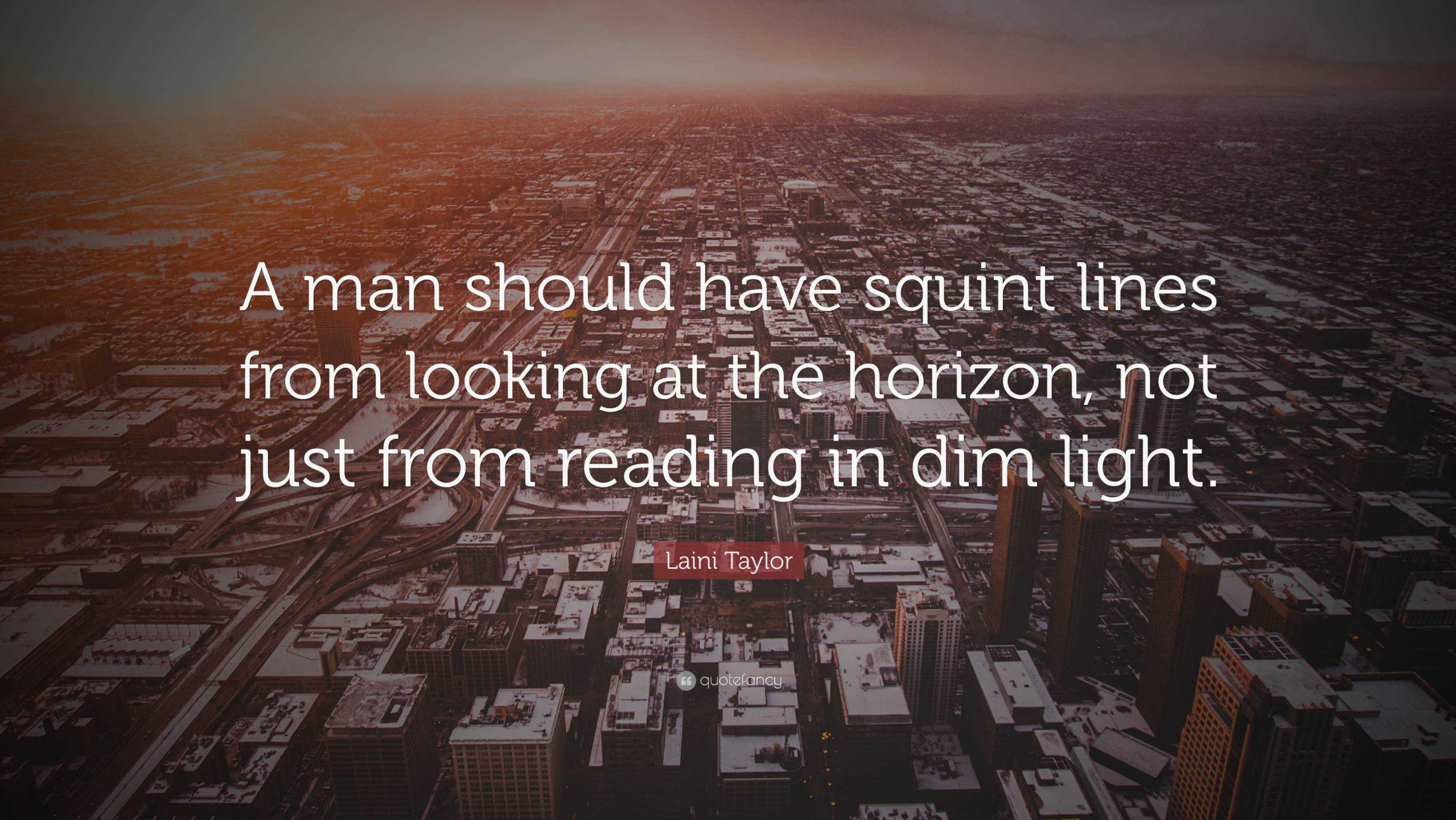
DEVELOPED A "LOGIC MODEL"






Well.....?



An aerial photograph of a city at sunset, with a warm orange glow from the sun low on the horizon. The city's grid pattern is visible, with numerous buildings and a complex highway interchange in the lower-left quadrant. The text is overlaid in the center of the image.

A man should have squint lines  
from looking at the horizon, not  
just from reading in dim light.

Laini Taylor

 quote fancy