



FRANKLIN TOGETHER

REENTRY COALITION OF FRANKLIN COUNTY



Facilitators

- ▶ **Dr. Kim Eaton**, Managing Co-Chair Franklin Together Reentry Coalition Franklin County Director of Reentry & Clinical Quality Assurance
- ▶ **Megan Shreve**, CEO South Central Community Action Programs (SCCAP)
- ▶ **Leigh Elliott**, Franklin Together Reentry Coalition Coordinator

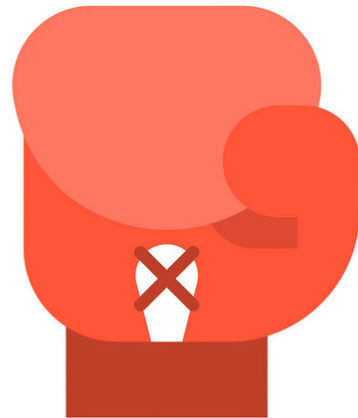


Workshop Goals

- ▶ Provide steps to keep a coalition vibrant
- ▶ Give tips on how to pick the right people
- ▶ Point out barriers to success
- ▶ Show examples
- ▶ Answer questions



Starting a Coalition is only half the fight!



KEEP FIGHTING!

What Next?

- ▶ Plan
- ▶ Do
- ▶ Check
- ▶ Act



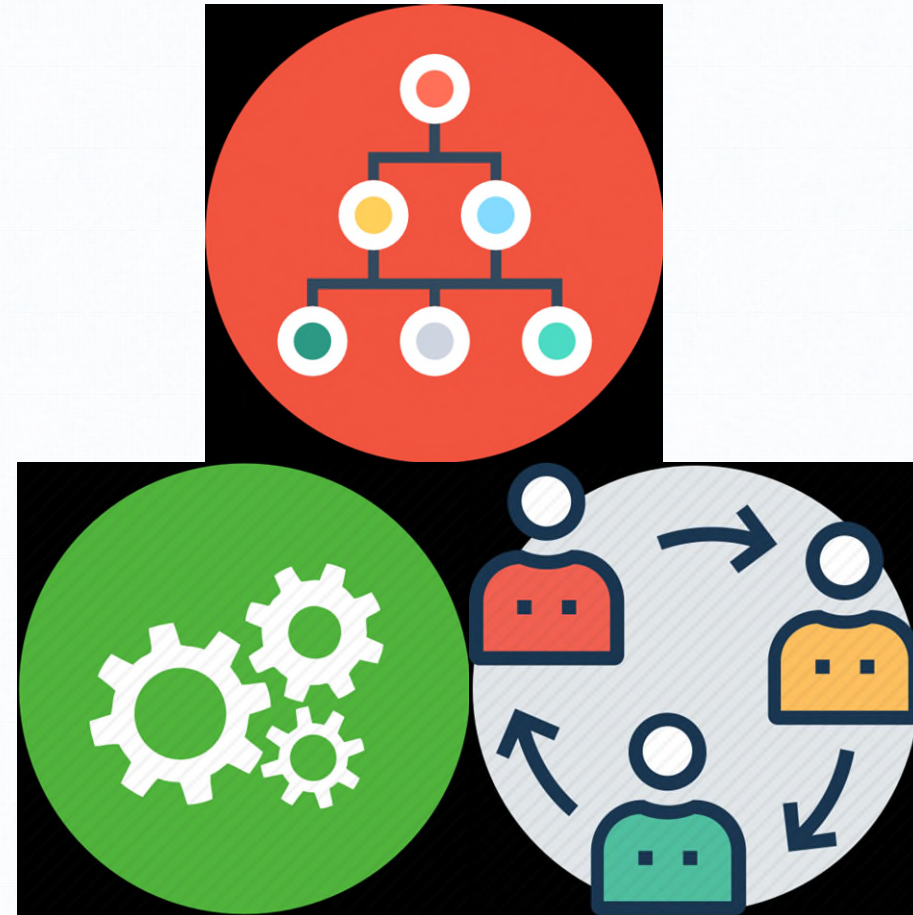
Time for a Check Up!

- ▶ Maintenance keeps coalitions on track
- ▶ Keeps people engaged
- ▶ Adds new people when needed
- ▶ Recognizes need to change and evolve
- ▶ Keeps goals fresh
- ▶ Pays attention to the cause
- ▶ Renews functions
- ▶ Sustains funding
- ▶ **KEEP FOCUSED ON PROJECTS!**



Maintenance Focus

- ▶ Key Structures
- ▶ Functions
- ▶ Relationships



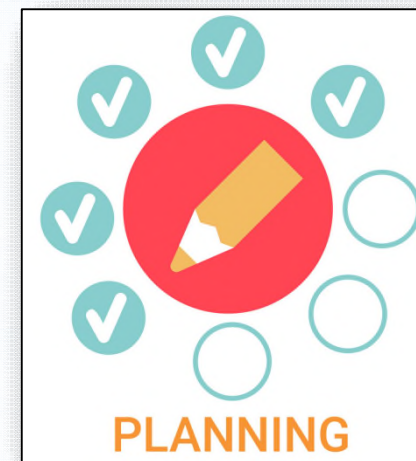
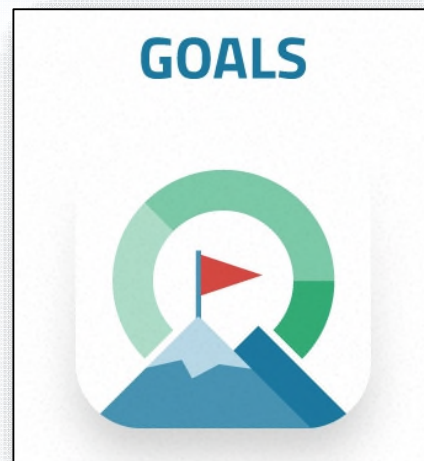
Key Structures

- ▶ Leadership
- ▶ Membership
- ▶ Division of Labor



Functions

- ▶ Vision
- ▶ Mission
- ▶ Values
- ▶ Goals
- ▶ Strategic Plan



Relationships

- ▶ Visibility in the community
- ▶ Public support
- ▶ Sense of belonging to a good cause



Franklin Together Key Structures - Leadership

- ▶ Top Leadership
 - ▶ Co-chairs
 - ▶ Managing and Supporting
 - ▶ Agency Partner
 - ▶ Coordinator



Coalition Leadership

- ▶ **Dr. Kim Eaton**, Managing Co-Chair Franklin Together Reentry Coalition
Franklin County Director of Reentry & Clinical Quality Assurance
- ▶ **Carrie Gray**, Supporting Co-Chair Franklin Together Reentry Coalition
Franklin County Administrator/Chief Clerk
- ▶ **Megan Shreve**, CEO South Central Community Action Programs (SCCAP)
- ▶ **Leigh Elliott**, Franklin Together Reentry Coalition Coordinator
- ▶ **Abby McElhiney**, SCCAP Marketing & Communications Coordinator



South Central Community Action Programs (SCCAP)

- ▶ The coordination of Franklin Together is managed through the Reentry Program, one of several programs within SCCAP
- ▶ **SCCAP's Mission:** To empower families and engage the community to pursue innovative and effective solutions to break the cycle of poverty!
- ▶ **SCCAP's Values:**
 - ▶ Respect Is Essential
 - ▶ Hope Inspires Change
 - ▶ Integrity Creates Trust
 - ▶ Every Person Is Valuable
 - ▶ Diversity Builds Strength
 - ▶ Working Together Achieves Solutions



Franklin Together Key Structures - Leadership

- ▶ Steering Committee
 - ▶ Elected by membership
 - ▶ Serve 3-year terms
 - ▶ Elections held yearly
 - ▶ 13 sector representatives
 - ▶ Includes Task Force Leaders
 - ▶ Written bylaws
 - ▶ Policies and procedures
 - ▶ Information policy
 - ▶ Annual Award policy
 - ▶ Membership Drive policy



Franklin Together Key Structures - Leadership

- ▶ Outreach
 - ▶ Annual Reentry Week Events
 - ▶ Simulations
- ▶ Community Engagement
 - ▶ Programs
 - ▶ Communities that HOPE
- ▶ Case Review
 - ▶ Interview inmates with complex needs
 - ▶ Provide solutions to needs
- ▶ Sustainability
 - ▶ Membership Drive
 - ▶ Fundraisers



Franklin Together Key Structures - Membership

- ▶ County Government
- ▶ Elected Officials
- ▶ Faith
- ▶ Public Health
- ▶ Jail
- ▶ Adult Probation
- ▶ State Parole
- ▶ Substance Abuse
- ▶ Courts
- ▶ Community Members
- ▶ Non-profit Agencies
- ▶ Domestic Relations
- ▶ Library
- ▶ Public Housing
- ▶ Employment Agencies
- ▶ Mental Health
- ▶ Businesses
- ▶ Shelters
- ▶ Education
- ▶ Service Agencies

Division of Labor

- ▶ **Top Leadership**
 - ▶ Managing Co-Chair – Directs Coordinator and Admin Assistant daily activities
 - ▶ Coordinator – Maintains website, communication, simulation rebuild
 - ▶ Marketing & Communications Coordinator– Creates promotional materials

- ▶ **Steering Committee**
 - ▶ Oversees direction of coalition
 - ▶ Leads efforts in specific sectors



Division of Labor

- ▶ **Task Force Leaders**
 - ▶ Send meeting invitations
 - ▶ Recruit new members
 - ▶ Set meeting agendas

- ▶ **Members**
 - ▶ Volunteer as needed for events
 - ▶ Promote reentry initiatives in their sectors



Step 1: Reasons for a Coalition

- ▶ Address urgent need
- ▶ Empower community to control future
- ▶ Obtain new community services
- ▶ More effective and efficient service delivery
- ▶ Pool current resources
- ▶ Increase communication among agencies
- ▶ Break stereotypes
- ▶ Revitalize groups
- ▶ Launch new initiatives
- ▶ Develop political clout to benefit community
- ▶ Create social change



Functions

- ▶ **Our Vision** is for all formerly incarcerated individuals to successfully reintegrate into the community and remain free!



Functions

- ▶ **Our Mission** is to develop strong collaborative community and professional partnerships that will empower and support formerly incarcerated individuals, and their families, to reduce recidivism and encourage them to become contributing members of the community. We advocate for change that supports successful reentry for all returning individuals.



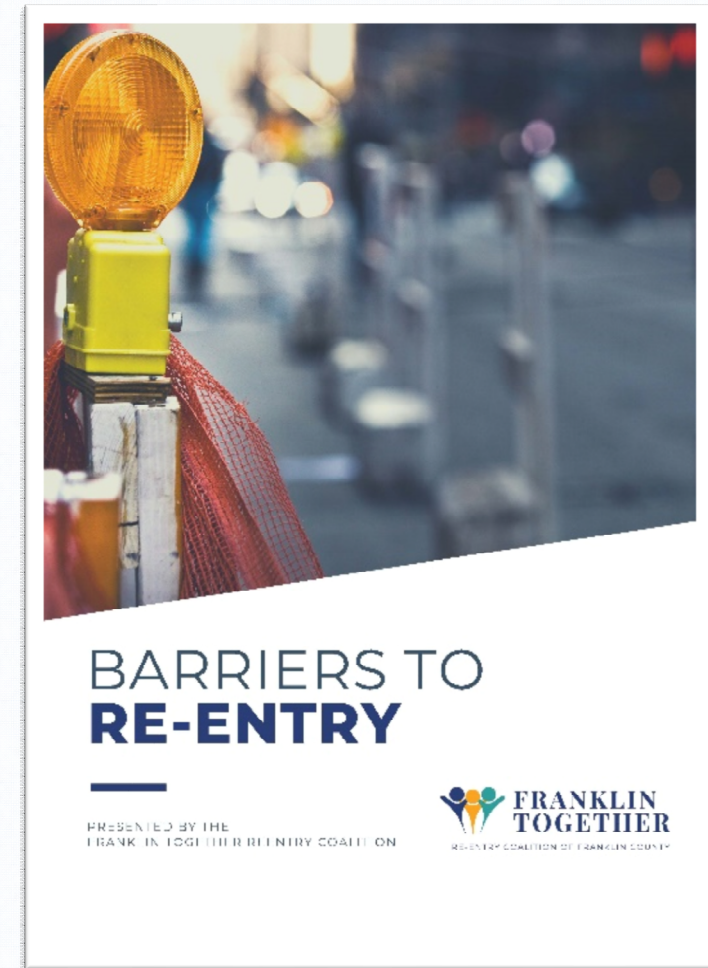
Functions

- ▶ **Values:** We value, Individuals, Hope, Collaboration, and Dedication, as part of our vision and mission.



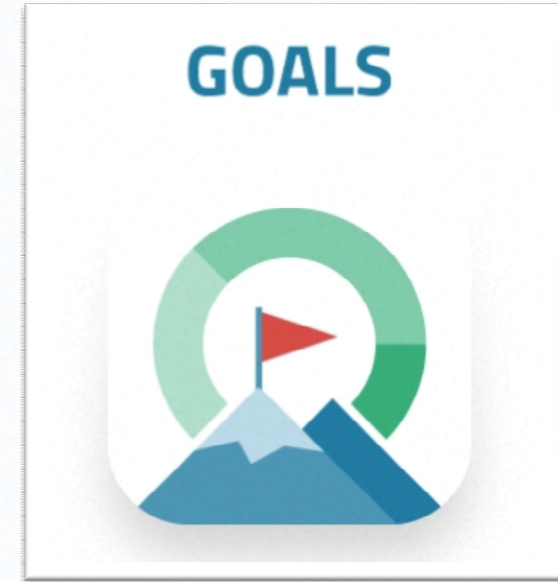
Functions

- ▶ Strategic plan
 - ▶ Created in 2016
 - ▶ Revised and changes adopted in 2020
 - ▶ Used to create White Paper: Barriers to Reentry



Functions

- ▶ **Goals**
 - ▶ Work plan revised annually
 - ▶ Work plan connected to funding
 - ▶ Work plan with focus on projects to meet needs



Relationships

- ▶ Visibility in the community
 - ▶ Facebook & Website
 - ▶ Reentry Simulation Events
 - ▶ News Coverage
 - ▶ Emails
 - ▶ Educational Presentations
 - ▶ White Paper: Barriers to Reentry
 - ▶ Attend PARC meetings
 - ▶ PROJECTS!!!!



Relationships

- ▶ Public support
 - ▶ Bimonthly Meetings
 - ▶ Task Force Meetings
 - ▶ Requests for Presentations
 - ▶ Reentry Simulation Events
 - ▶ Reentry Week Events



Relationships

- ▶ Sense of belonging to a good cause
 - ▶ Annual Appreciation Awards
 - ▶ Membership Drive
 - ▶ Member listing on website
 - ▶ Donation to Care Packages
 - ▶ Annual Reentry Week Events
 - ▶ Posting “feel good” stories
 - ▶ Former Steering Committee member given pardon
 - ▶ Member earned CRS designation
 - ▶ Returning individual speaker at each meeting



Franklin Together



Annual Appreciation Awards

- ▶ Created Award Policy and Procedure
 - ▶ Annual awards are given to promote and thank community members for support of programs and policies that benefit returning individuals.
- ▶ Created Nomination Form
- ▶ Award Given by Chairman of Board of Commissioners
- ▶ Award Gifts
- ▶ Four Categories
 - ▶ Agency
 - ▶ Business
 - ▶ Individual Volunteer
 - ▶ Returning Individual



2020 Award Winners



Franklin Together Membership Drive

- ▶ Second membership drive
- ▶ Collected \$5,000
- ▶ Membership Tiers
 - ▶ Sustaining - \$1,000 donation
 - ▶ Sponsoring - \$500
 - ▶ Patron - \$250
 - ▶ Contributing - \$100
 - ▶ Supporting - \$50
 - ▶ Advocate - \$25



Franklin Together Membership Drive

- ▶ **Sustaining Member- \$1,000** (framed membership certificate, *yeti*, partner recognition at community events, and recognition on social media/website)
- ▶ **Sponsoring Member- \$500** (framed membership certificate, *padfolio*, partner recognition at community events, and recognition on social media/website)
- ▶ **Patron Member- \$250** (framed membership certificate, *stainless steel tumbler*, partner recognition at community events, and recognition on social media/website)
- ▶ **Contributing Member- \$100** (membership certificate, *pen & lanyard*, partner recognition at community events, and recognition on social media/website)
- ▶ **Supporting Member-\$50** (membership certificate, *pen*, member recognition on social media/website)
- ▶ **Advocate Member- \$25** (membership certificate, member recognition on social media/website)

Care Packages



Gear for Careers



**GEAR FOR
CAREERS**

Home Start

Home Start

Communities that HOPE



Moving Forward Peer Support Group



Educational Scholarships



The Reentry Employment Alliance



**The Reentry
Employment Alliance**

Franklin Together Keys to Success

- ▶ Strong leadership
- ▶ Financial support
- ▶ Public buy-in
- ▶ Reentry Simulations
- ▶ White Paper: Barriers to Reentry
- ▶ Active Facebook and website
- ▶ Reentry Month Events
- ▶ Educational Presentations
- ▶ Annual Work Plan
- ▶ Ideas that keep energy flowing (awards, events, membership drive)





Contact Information

▶ Email or call

- ▶ Franklin Together Managing Co-chair

- ▶ Kim Eaton

- ▶ kmeaton@franklincountypa.gov

- ▶ 717-660-2677

- ▶ Franklin Together Coordinator

- ▶ Leigh Elliott

- ▶ lelliott@sccap.org

- ▶ 717-778-7758



REENTRY COALITION OF FRANKLIN COUNTY