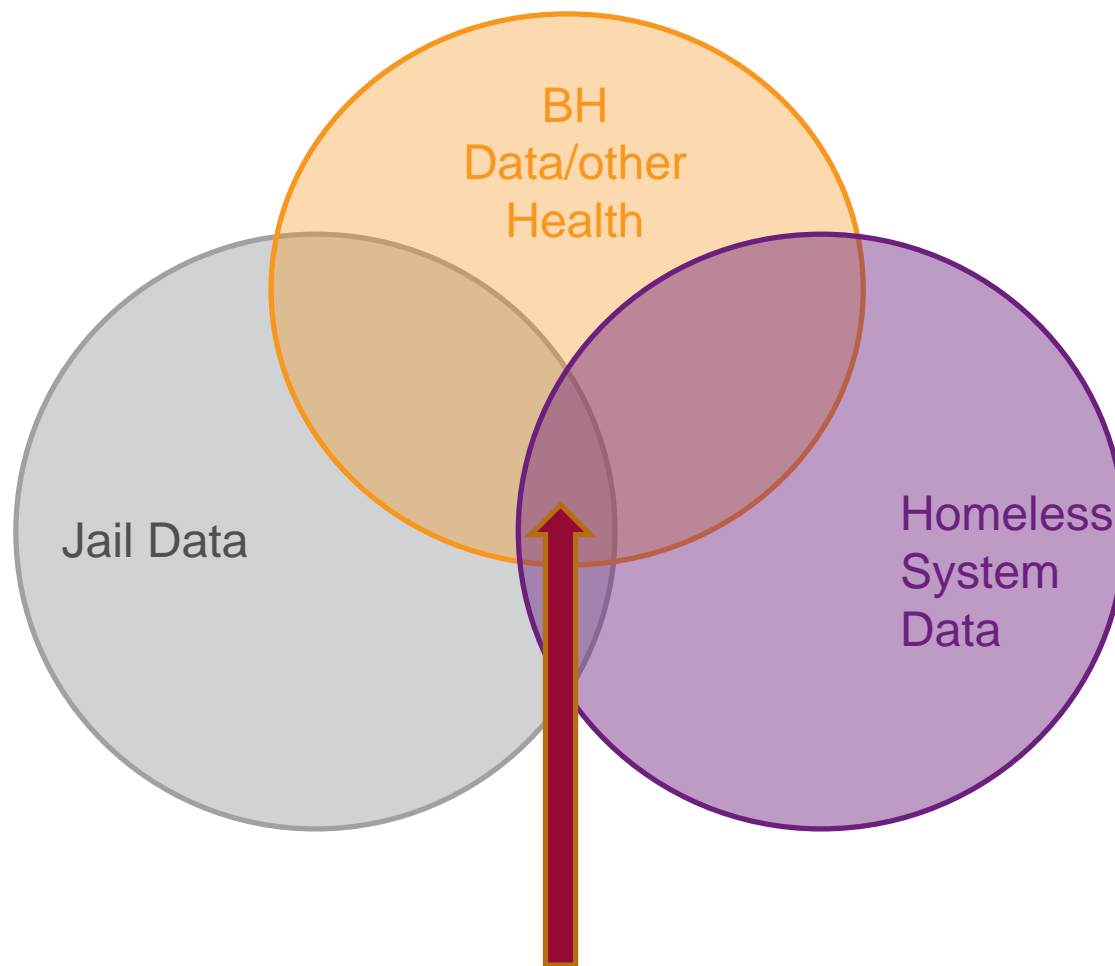


# Approaches to Reducing Homelessness

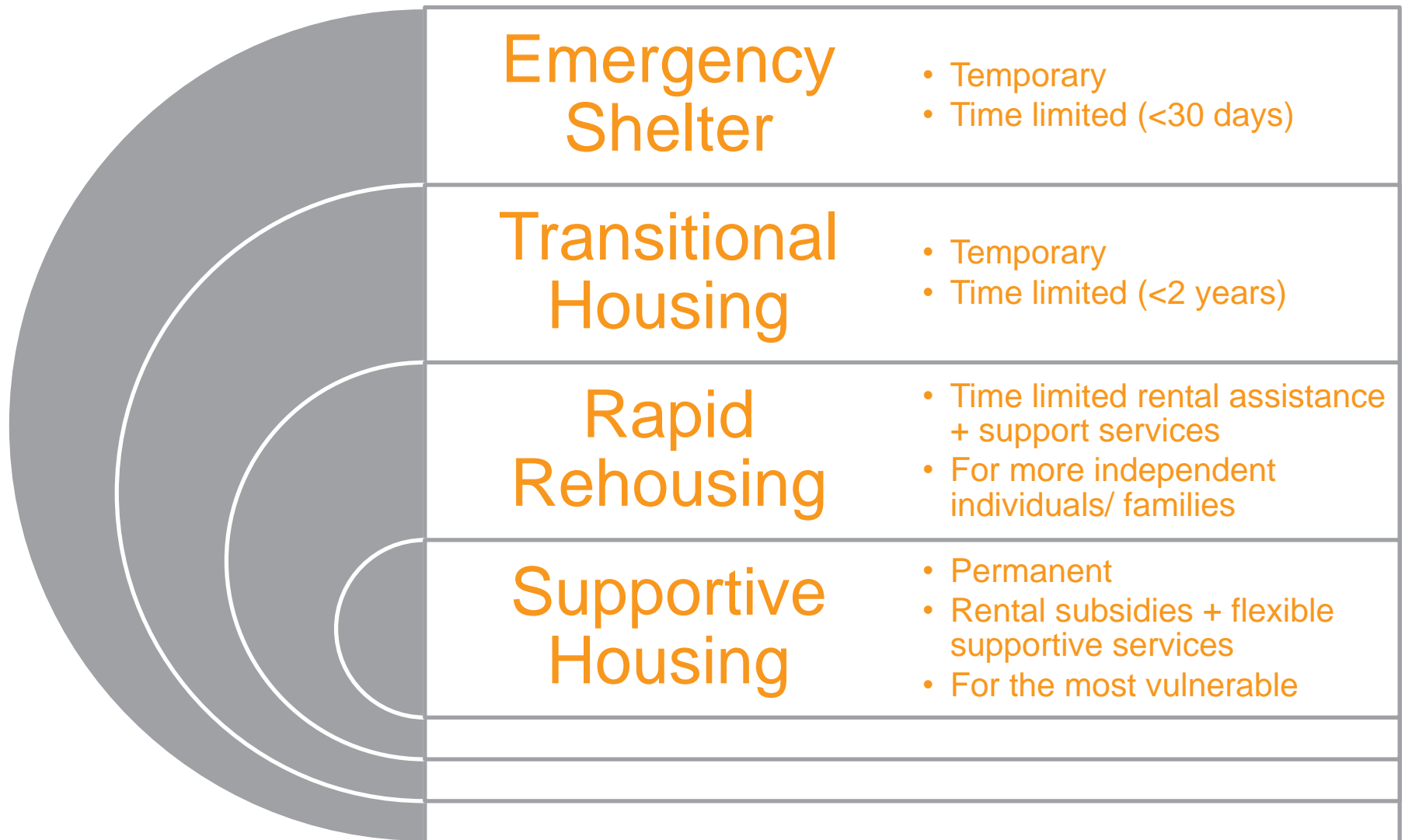
*PA State Stepping Up Summit*

*December 5, 2017*

# Stepping Up Q3 Do we have baseline data?



# CoC/Homeless System Housing Options



# What is Supportive Housing?

Supportive housing combines affordable housing with services that help people who face the most complex challenges to live with stability, autonomy and dignity.

Housing:  
*Affordable*  
*Permanent*  
*Independent*

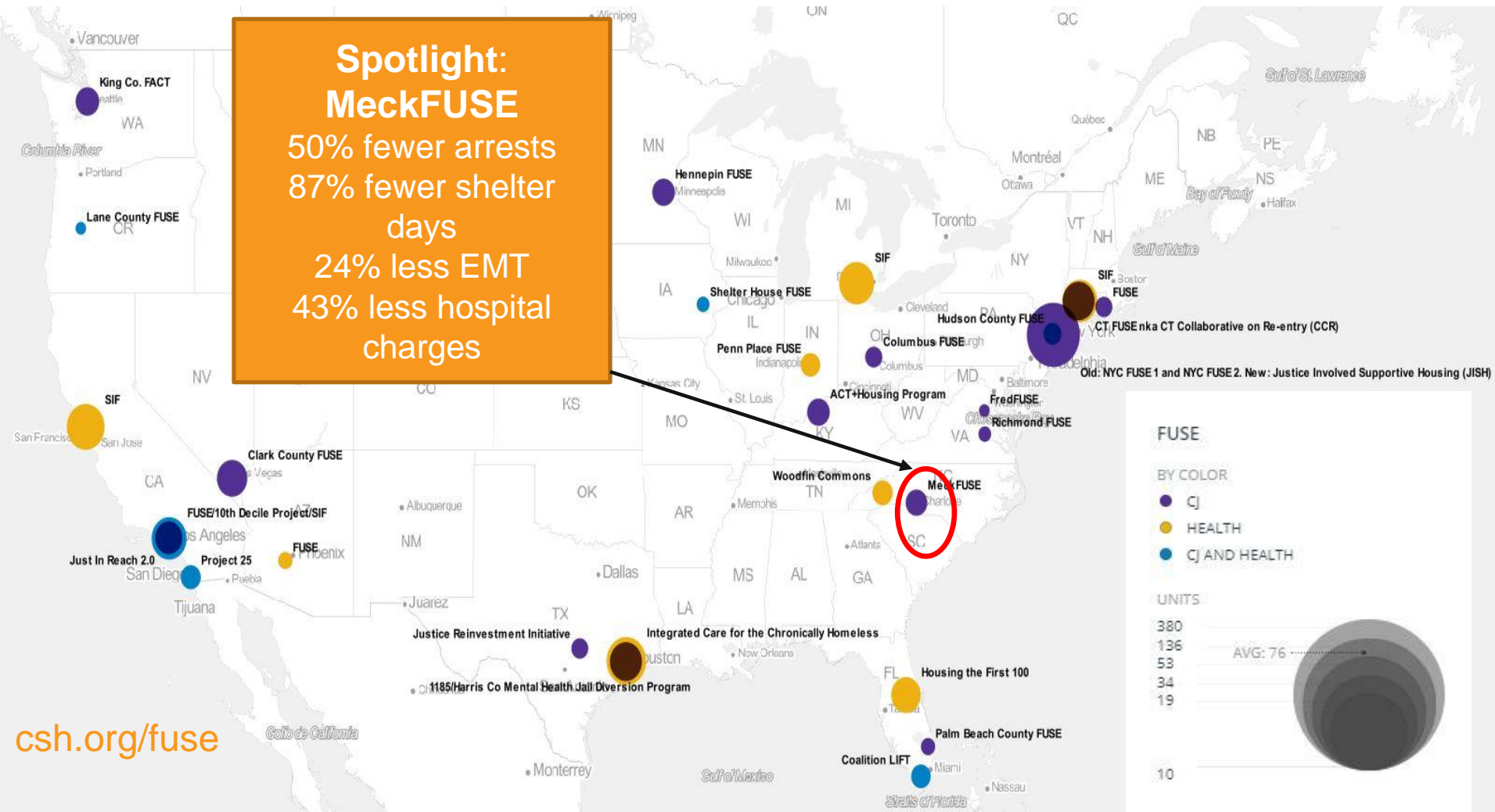


Support:  
*Flexible*  
*Voluntary*  
*Tenant-centered*  
*Coordinated Services*

# Frequent Users Systems Engagement (FUSE):

More than 30 communities have implemented supportive housing for frequent users using the **FUSE** planning approach, combining *data driven targeting*, *multi-stakeholder engagement*, and *targeted supportive housing*

**Spotlight:  
MeckFUSE**  
50% fewer arrests  
87% fewer shelter days  
24% less EMT  
43% less hospital charges



# Evidence for Supportive Housing

- 79% to 83% stay housed one year or more
- 40% to 60% reduction in jail days
- 24% to 34% fewer emergency room visits
- 27% to 29% fewer inpatient admissions and hospital days
- 87% fewer days in detox and fewer psychiatric inpatient admissions



# The Need in Pennsylvania

Estimated supportive housing need is 12,563 based on expected rates of homelessness for populations with mental illness and other challenges coming out of jails and prisons in the state (based on BJA data)\*

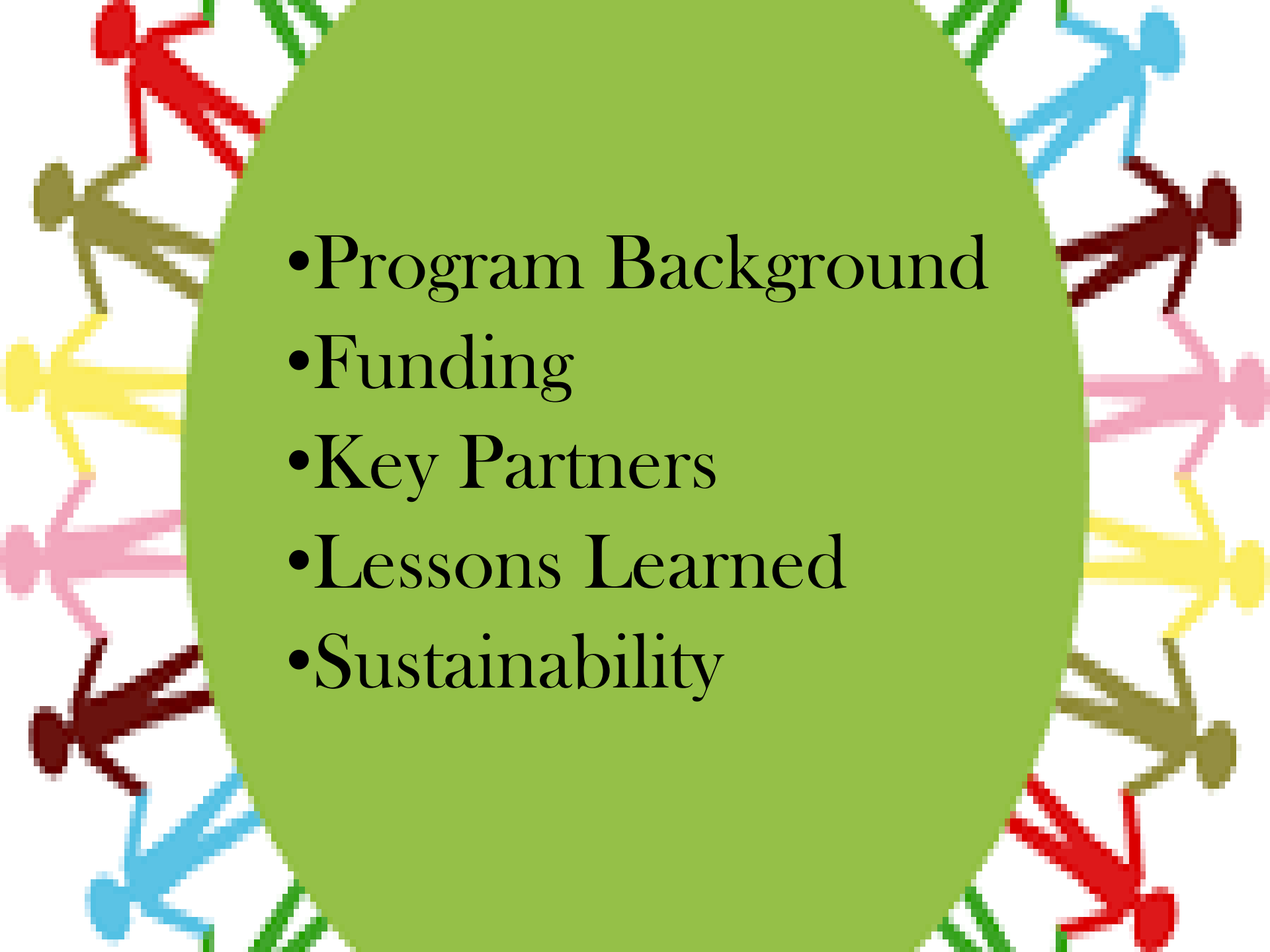
\* [csh.org/data](http://csh.org/data)





**Columbia County  
Justice Master Leasing  
Housing Program**



- 
- Program Background
  - Funding
  - Key Partners
  - Lessons Learned
  - Sustainability

# Presenters' Contact Information

Name	Org	Email/Website	Phone
<b>Kim Keaton</b>	Associate Director of Data and Analytics, CSH	<a href="mailto:Kim.Keaton@csh.org">Kim.Keaton@csh.org</a> csh.org csh.org/fuse	917-297-9033
<b>Barbara Warunek</b>	Court Programs and Development Coordinator, Columbia Co. Courthouse	<a href="mailto:bwarunek@columbiapa.org">bwarunek@columbiapa.org</a>	570-389-5670
<b>Wendy Flanigan</b>	Coordinator of Service Development and Quality Management Bucks Co. Department of MH/DP	<a href="mailto:wflanigan@buckscounty.org">wflanigan@buckscounty.org</a>	215-444-2882