



# Community Action for Recovery and Diversion

SAFETY • WELLNESS • JUSTICE

*A safer, healthier York County community where people with behavioral health needs are connected to healing care and support as they interact with the justice system.*

# CARD Leadership

- **Amy Evans** – CARD Project Director
- **Honorable Craig T. Trebilcock** – York County Court of Common Pleas
- **Timothy J. Barker** – First Assistant District Attorney of York County
- **April Billet-Barclay** – Director, York County Probation Services
- **Dr. Matt Howie** – York County Chief Health Strategist & Medical Director for the York City Bureau of Health
- **Honorable Michael W. Flannelly** – York County Court of Common Pleas

CARD is proud to have financial and in-kind support from ...

The County of York  
The York County Bar Foundation  
The Powder Mill Foundation  
The A.J. Glatfelter Foundation  
The Warehime Foundation  
WellSpan Philhaven

**Thank  
You!**

*There's usually more than meets the eye ...*

**Visible  
Consequences**

**Theft/Burglary**

**Drug Use/ODs**

**Unemployment**

**CYF Interventions in Families**

**Assaults**

**Juvenile Delinquency**

**Invisible  
Drivers**

Mental  
Abuse as  
a Child

Combat  
Trauma

Biological  
Predisposition to  
Addiction

Mental  
Health  
Issues

Victim of  
Physical  
Assault/Abuse

Family History  
of Substance  
Abuse

Exposed to  
Alcohol/Drugs at  
Teen/Preteen  
Age

Victim of  
Sexual  
Assault

Parental  
Death or  
Abandonment

Chronic  
Pain/Injury

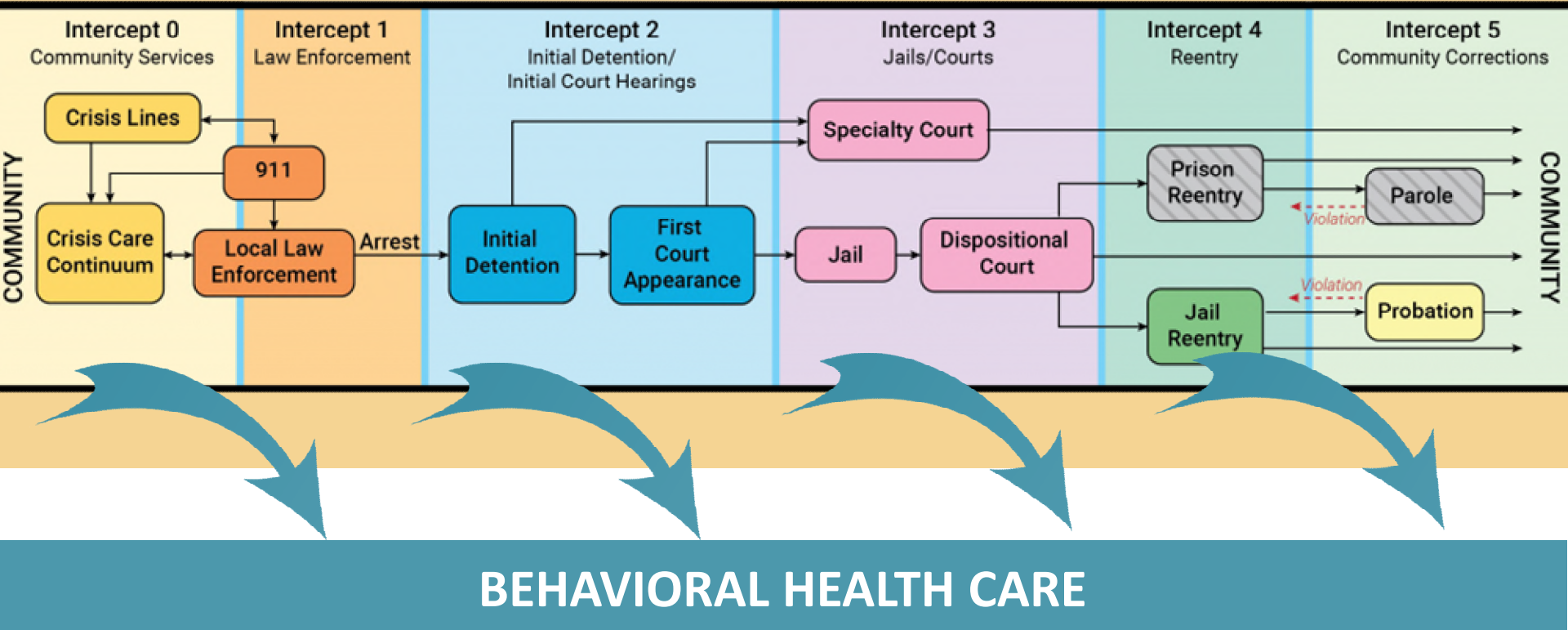
Lack of  
Education

Overuse of RX  
Pain Meds

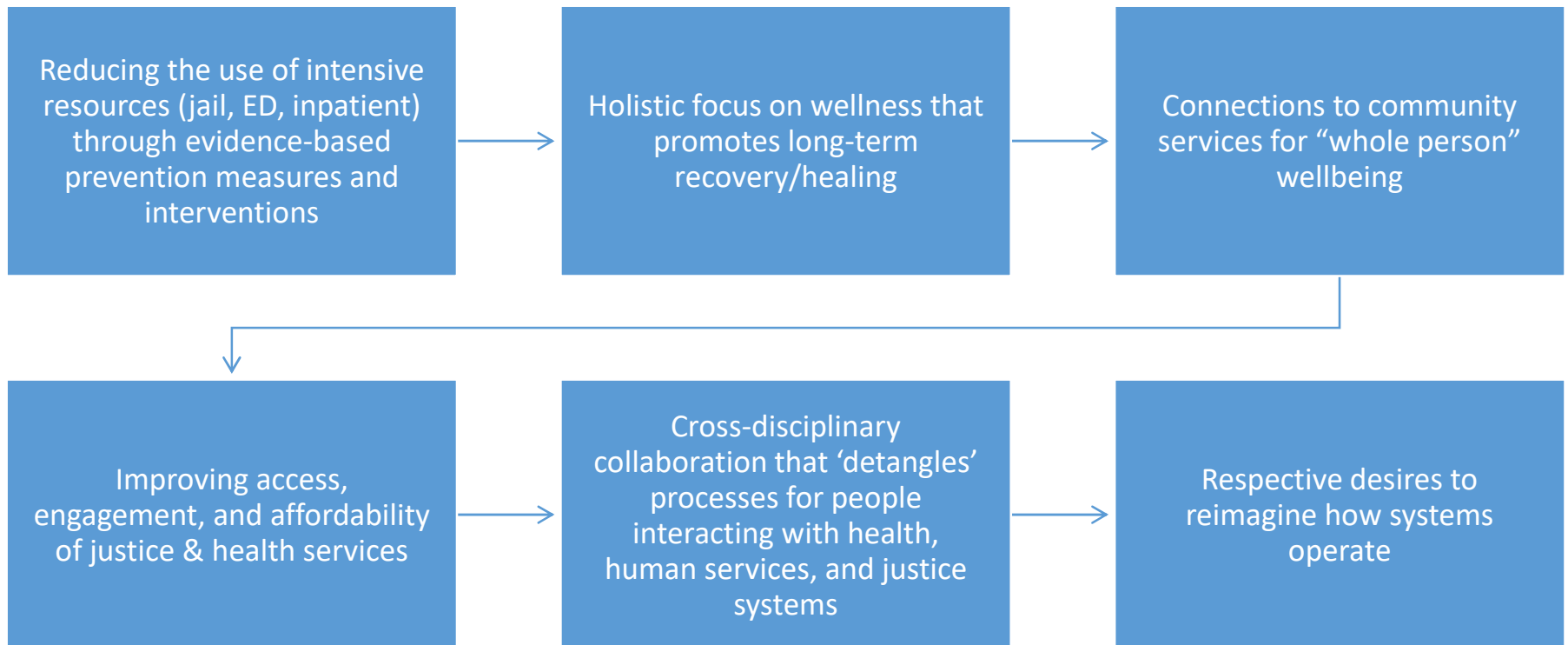
Foster Care  
Background

# Opportunities for Diversion

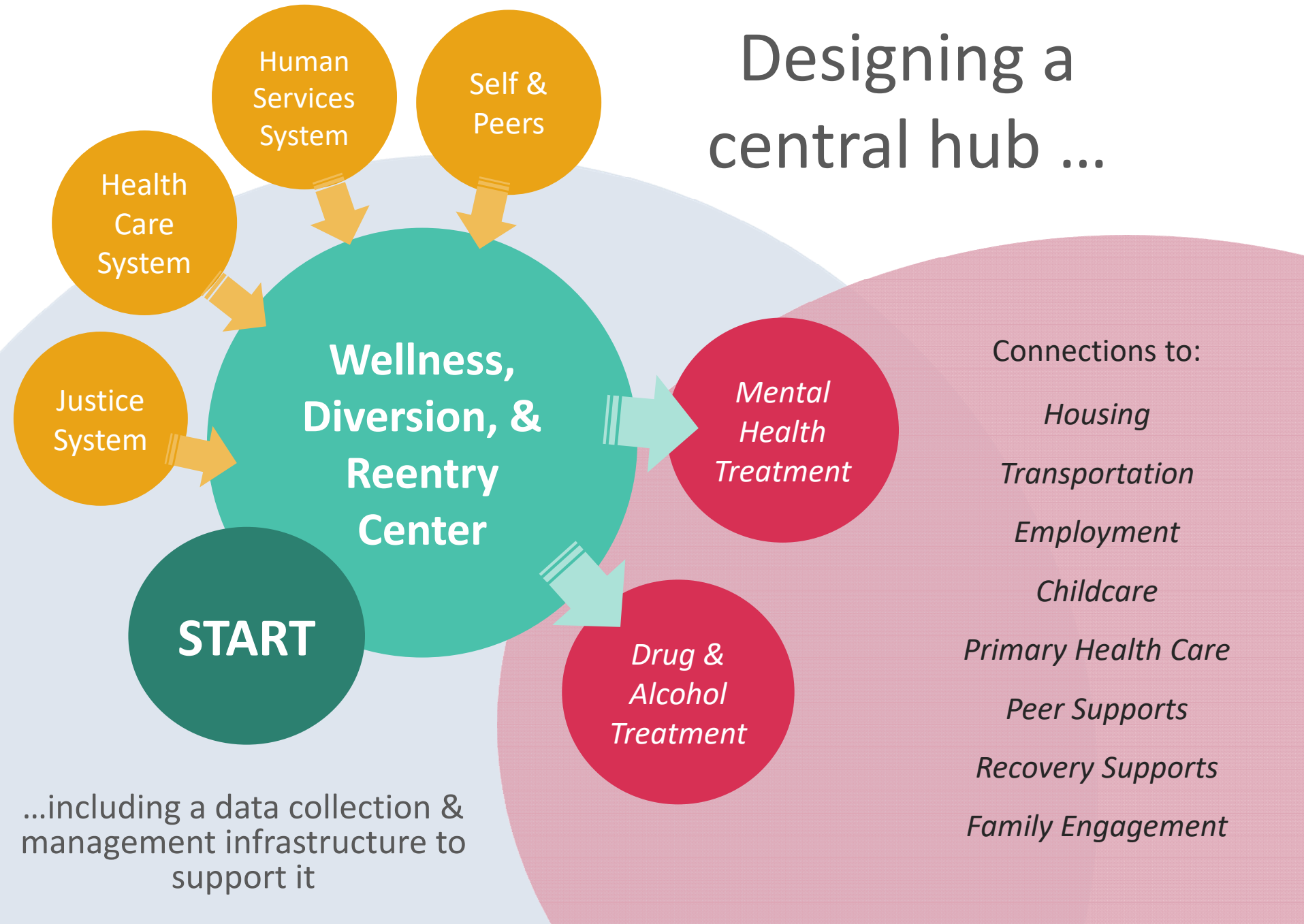
## THE JUSTICE SYSTEM



# Aligned Goals & Objectives



# Designing a central hub ...





*Mental Health*  
*+ Substance Use Treatment*  
*Behavioral Health*

***Trauma-informed care:***

*Providing services with the assumption that individuals have a history of trauma*

# START

*Specialized Treatment  
and Recovery Team*





## *Vision*

**A Trusted Partner  
Reimagining Healthcare  
Inspiring Health**

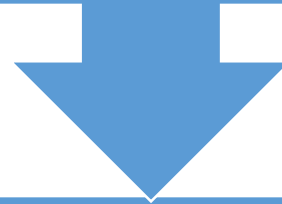
## *Mission*

**Working as one to improve health through exceptional care for all,  
lifelong wellness and healthy communities.**



# START is a CCBHC- Certified Community Behavioral Health Clinic

START is designed and committed to being a welcoming, comfortable, safe, and easy to use service for the community focused on



*“how can we help with what is most important to you right now?”*



# START

- Inviting, comfortable, safe space
- Community and Peer Advisory Board to drive patient-centered, holistic care
- Community partners to help meet needs of consumers
- All staff are recovery-oriented and trained in Trauma Informed Care

Patient  
Centered,  
Evidenced  
Based  
Approach to  
Treatment

# START Multidisciplinary Team Composition:

Psychiatry

Therapy

Behavioral  
Health Peer  
Support

Recovery  
Support

Primary  
Care/Nursing

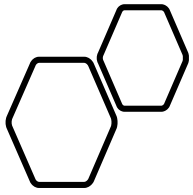
Addiction  
Medicine

Case  
Management

Crisis  
Intervention

# START Overview of Services

- Crisis Assessments
- Mental Health and SUD Assessments
- Evaluation for psychiatry/addiction services
- Medication assisted treatment for opioid and alcohol use disorders
- Care Coordination
- Social Work – connections to mitigate Social Determinants of Health
- Certified Recovery Specialist support
- Referrals to higher levels of care for MH and SUD treatment
- Brief evidence-based therapy and connections to outpatient therapy as needed
- Triage, stabilize and connect back to primary provider



# Timeline for services



# Initial Connections

- Cross-training of staff
- Preliminary consultations/evaluations
- Referrals from diversion programs
- Referrals from 'traditional' CJ system
- Reentry support
- MAT connections
- Connections to community resources



Dedicated Offices For:  
CARD Project Director  
Pretrial Bail Officer for Stepping Up Team  
D&A Level of Care Assessor  
PO with mental health caseload  
Mental Health Court PO  
2 Mental Health Case Managers (MH-IDD)

# Law enforcement as a diversion route



- Law Enforcement Assisted Diversion
- Crisis Intervention Training Program
- Co-Responder Programs

**BEHAVIORAL HEALTH CARE**



# What does a CARD/START referral look like?

- ✓ Needs same or next day services
- ✓ Does not have an established PCP or specialist
- ✓ Client stability or court process depends on appnt



# What does one **NOT** look like?

- ✓ Way to jump the waiting list at regular doctor
- ✓ Court-ordered mental health/psychological evaluations
- ✓ Court-ordered drug & alcohol evaluations
- ✓ Competency evaluations





***START** is a  
community resource.*

*How to refer: call **START**  
front desk at **356-5060***

*Justice-involved client but not sure?  
call **CARD** at 771-9602 x2603*

# Additional strategies for successful diversion

- *Early intercept diversion*
- *Service silo elimination*
- *Agency/systems realignment*
- *Expanded supports for*
  - *Reentrants*
  - *Individuals seeking treatment*
  - *Individuals in need of other services*
  - *Children, youth, and families*
- *Community ownership*



# BENEFITS OF CARD

- ✓ Proven way to reduce crime
- ✓ Works across system silos to eliminate road blocks
- ✓ Benefits justice system, health systems, & community
- ✓ Avoids duplication of resources and expenses
- ✓ Early interventions save lives & make community safer
- ✓ Better investment of tax dollars compared to jail
- ✓ People restored to their families & communities

# Questions?



***Michele Crosson, LSW, MBA***

START Project Director

WellSpan Philhaven

Mobile: 717.673.22000

[mccrosson4@wellspan.org](mailto:mccrosson4@wellspan.org)

***Amy Evans, AICP***

Project Director

Community Action for Recovery & Diversion

[aevans@ycpc.org](mailto:aevans@ycpc.org)

717-771-9602 x2603



**CARD**